

WAAS CH <b>86905</b> <b>W04A</b>	APP CRS <b>040°</b>	Rwy Idg <b>4775</b> TDZE <b>58</b> Apt Elev <b>72</b>
--	------------------------	---

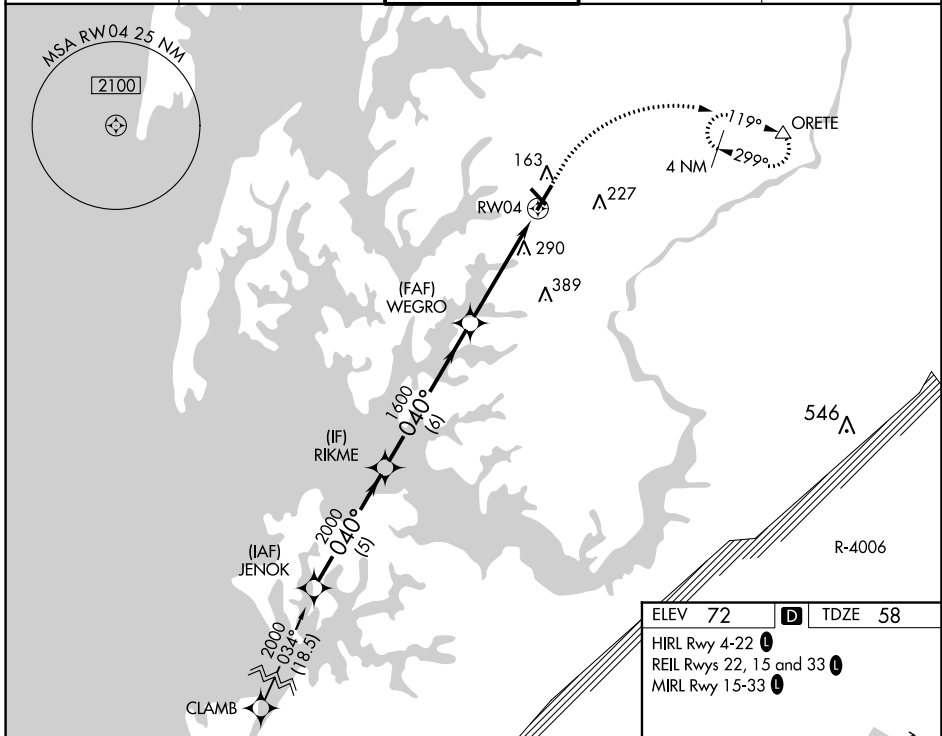
# RNAV (GPS) RWY 4

EASTON/NEWMAM FIELD (ESN)

**⚠** DME/DME RNP-0.3 NA. When local altimeter setting not received, use Cambridge altimeter setting; increase LPV DA to 303 feet, LNAV/VNAV DA to 391 feet and all MDA 60 feet; increase LPV and LNAV/VNAV all Cats visibility and LNAV Cat C/D visibility 1/8 SM and increase Circling Cat C/D visibility 1/4 SM. VDP and Baro-VNAV NA when using Cambridge altimeter setting. Circling Rwy 15, 33 NA at night. For uncompensated Baro-VNAV systems, LNAV/VNAV NA below -15°C (5°F) or above 54°C (130°F).

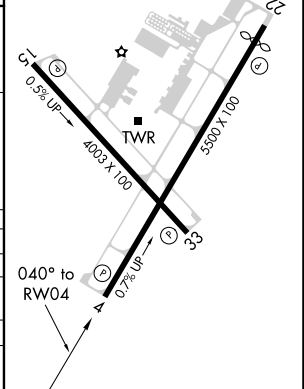
**MISSED APPROACH:**  
Climb to 700 then climbing right turn to 2000 direct ORETE and hold.

ATIS <b>124.475</b>	POTOMAC APP CON <b>133.75 254.35</b>	<b>EASTON TOWER ★</b> <b>118.525 (CTAF) 0</b>	GND CON <b>119.075</b>	CLNC DEL <b>119.075</b>
------------------------	---	--	---------------------------	----------------------------



ELEV <b>72</b>	<b>D</b>	TDZE <b>58</b>
HIRL Rwy 4-22 <b>0</b>		
REIL Rwy 22, 15 and 33 <b>0</b>		
MIRL Rwy 15-33 <b>0</b>		

	JENOK	RIKME	WEGRO	RW04	ORETE
	2000	2000	1600	700	2000
	040°	040°			
GP 3.00° TCH 44				*1.6 NM to RW04	*LNAV only
	5 NM	6 NM	3.1 NM	1.6	
CATEGORY	A	B	C	D	
LPV DA		258-3/4	200 (200-3/4)		
LNAV/VNAV DA		346-1	288 (300-1)		
LNAV MDA	600-1	542 (600-1)	600-1 3/8	542 (600-1 1/8)	
<b>C</b> CIRCLING	600-1 528 (600-1)	640-1 568 (600-1)	640-1 1/8 568 (600-1 1/8)	740-2 668 (700-2)	



NE-3, 25 FEB 2021 to 25 MAR 2021

NE-3, 25 FEB 2021 to 25 MAR 2021