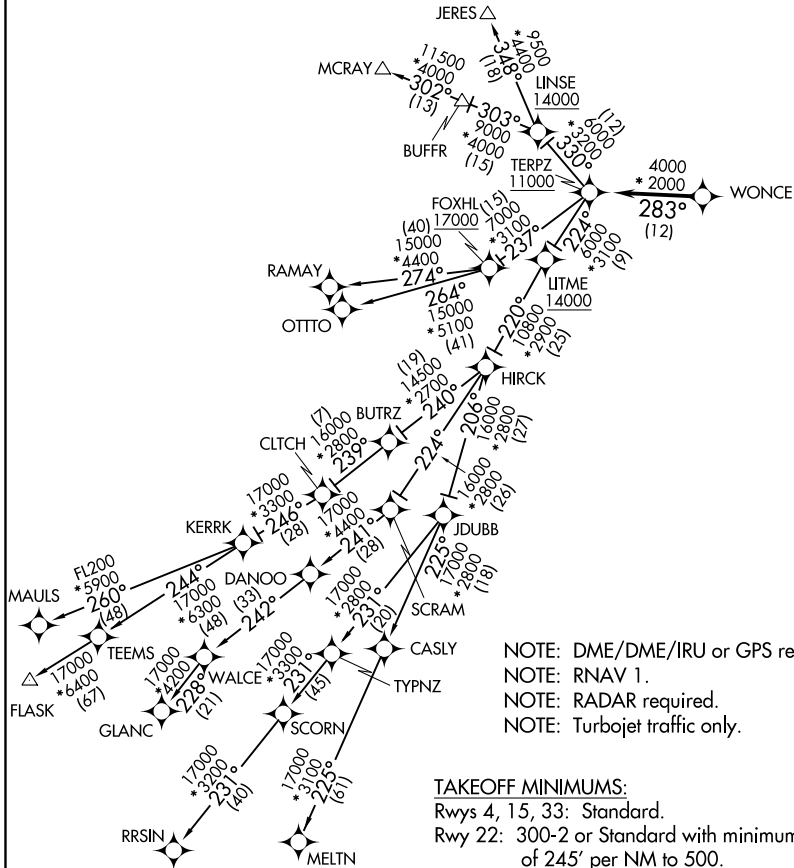


TERPZ SEVEN DEPARTURE (RNAV)

EASTON, MARYLAND

TOP ALTITUDE:
RAMAY, OTTTO, MAULS, FLASK,
RRSIN, GLANC, MELTN
TRANSITIONS: 17000
JERES, MCRAY TRANSITIONS:
16000

ATIS
 124.475
 CLNC DEL
 119.075
 GND CON
 119.075
 EASTON TOWER ★
 118.525 (CTAF)
 POTOMAC DEP CON
 133.75 254.35



NOTE: DME/DME/IRU or GPS required.
 NOTE: RNAV 1.
 NOTE: RADAR required.
 NOTE: Turbojet traffic only.

TAKEOFF MINIMUMS:

Rwys 4, 15, 33: Standard.
 Rwy 22: 300-2 or Standard with minimum climb
 of 245' per NM to 500.

NOTE: Chart not to scale.

TERPZ SEVEN DEPARTURE (RNAV)

(TERPZ7.TERPZ) 26MAR20

EASTON, MARYLAND

EASTON/NEWMAM FIELD (E/SN)

NE-3, 25 FEB 2021 to 25 MAR 2021

NE-3, 25 FEB 2021 to 25 MAR 2021