

WAAS CH 70336 W17A	APP CRS 170°	Rwy Idg TDZE Apt Elev	4519 574 574
--	------------------------	-----------------------------	---

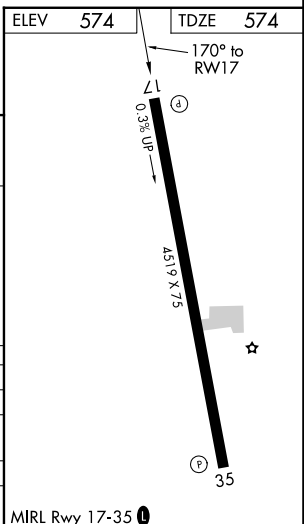
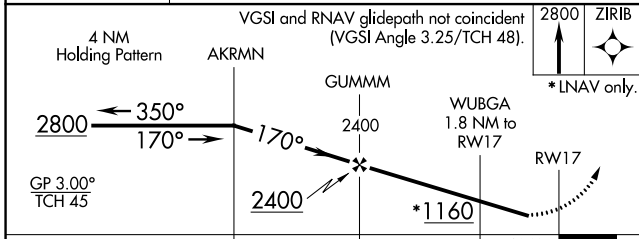
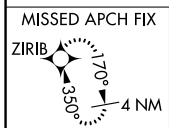
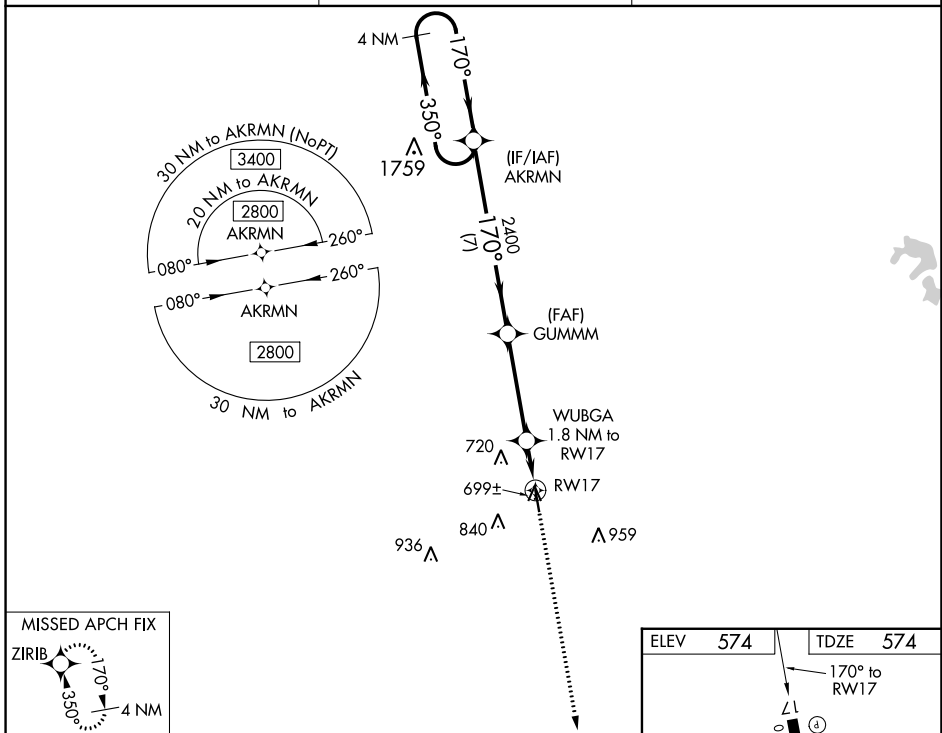
RNAV (GPS) RWY 17

LOUISVILLE WINSTON COUNTY (LMS)

Baro-VNAV NA. DME/DME RNP-0.3 NA. Use Philadelphia Muni altimeter setting; when not received, use George M Bryan altimeter setting and increase LPV DA to 907 feet and all visibilities 1/8 mile; LNAV/VNAV DA to 986 feet all visibilities 1/8 mile; increase all MDA 20 feet and Circling Cats C/D visibility 1/4 mile. Helicopter visibility reduction below 3/4 SM NA.

MISSED APPROACH: Climb to 2800 direct ZIRIB and hold.

MPE AWOS-3P 118.725	MEMPHIS CENTER 132.75 350.25	UNICOM 122.7 (CTAF) 0
-------------------------------	--	---------------------------------



CATEGORY	A	B	C	D
LPV DA		891-1 1/8	317 (400-1 1/8)	
LNAV/VNAV DA		970-1 3/8	396 (400-1 3/8)	
LNAV MDA	1020-1	446 (500-1)	1020-1 3/8	446 (500-1 3/8)
C CIRCLING	1080-1 506 (600-1)	1320-1 746 (800-1)	1380-2 1/4 806 (900-2 1/4)	1380-2 1/2 806 (900-2 1/2)

SC-4, 25 FEB 2021 to 25 MAR 2021

SC-4, 25 FEB 2021 to 25 MAR 2021