

WAAS CH <b>53335</b> <b>W35A</b>	APP CRS <b>350°</b>	Rwy Idg TDZE <b>574</b> Apt Elev <b>574</b>	<b>4519</b>
--	------------------------	---	-------------

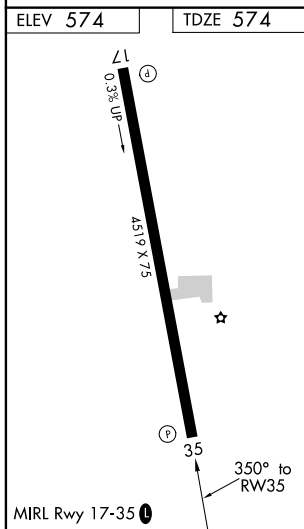
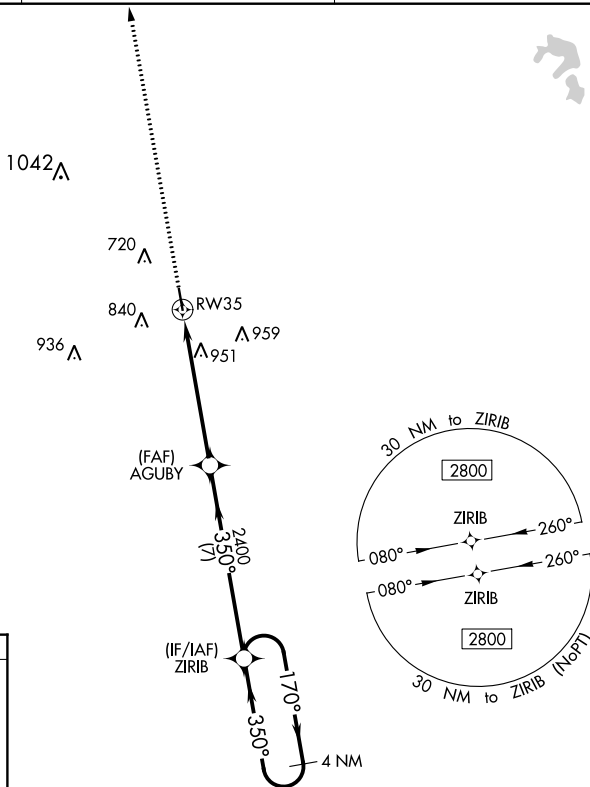
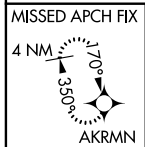
# RNAV (GPS) RWY 35

LOUISVILLE WINSTON COUNTY (LMS)

**W** Baro-VNAV NA. DME/DME RNP-0.3 NA. Use Philadelphia Muni altimeter setting; when not received, use George M Bryan altimeter setting and increase all LPV DA to 905 feet and LNAV/VNAV DA to 1383 feet; increase all MDA 20 feet and Circling Cats C/D visibility ¼ mile. Helicopter visibility reduction below 1 SM NA.

**NA** MISSED APPROACH: Climb to 2800 direct AKRMN and hold.

MPE AWOS-3P <b>118.725</b>	MEMPHIS CENTER <b>132.75 350.25</b>	UNICOM <b>122.7 (CTAF) 0</b>
-------------------------------	--	---------------------------------



2800 AKRMN	VGSi and RNAV glidepath not coincident (VGSi Angle 3.75/TCH 52).		ZIRIB	4 NM Holding Pattern
	RW35	2400	350°	170° → 2800
		2400	← 350°	GP 3.00° TCH 40
	5.7 NM	7 NM		
CATEGORY	A	B	C	D
LPV DA	889-1½		315 (400-1½)	
LNAV/VNAV DA	1367-3		793 (800-1)	
LNAV MDA	1280-1	706 (800-1)	1280-2	706 (800-2)
<input checked="" type="checkbox"/> CIRCLING	1280-1 706 (800-1)	1320-1 746 (800-1)	1380-2¼ 806 (900-2¼)	1380-2½ 806 (900-2½)

SC-4, 25 FEB 2021 to 25 MAR 2021

SC-4, 25 FEB 2021 to 25 MAR 2021