

APP CRS 179°	Rwy Idg TDZE Apt Elev	5000 1316 1321
------------------------	-----------------------------	---

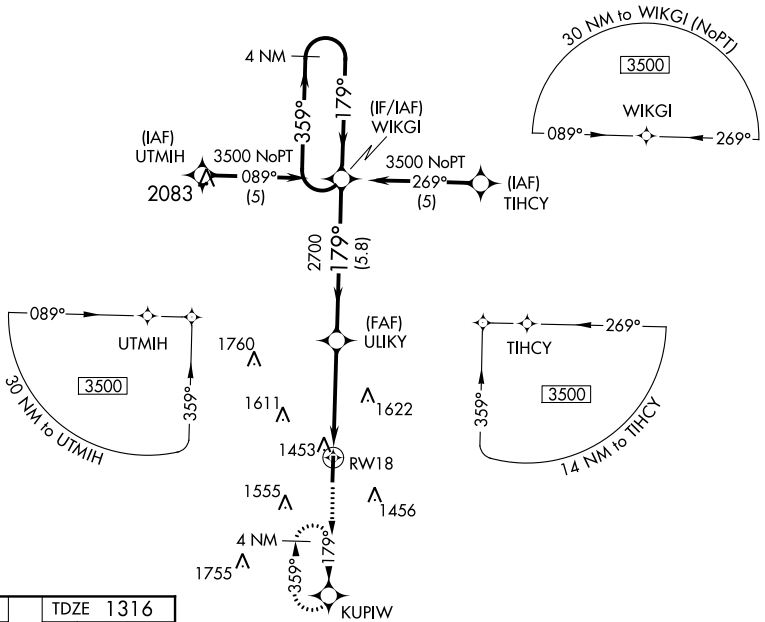
RNAV (GPS) RWY 18

FLOYD W JONES LEBANON (LBO)

When local altimeter setting not received, use Springfield-Branson National altimeter setting and increase all DA/MDA 120 feet.
 Baro-VNAV NA when using Springfield-Branson National altimeter setting.
 Baro-VNAV NA below -17° C (1° F). DME/DME RNP-0.3 NA.

MISSED APPROACH: Climb to 3500 direct KUPIW and hold.

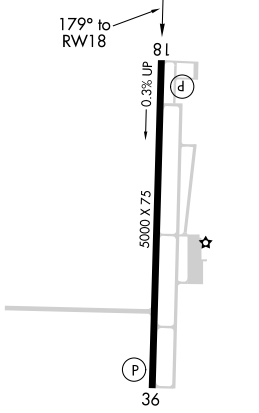
AWOS-3PT 118.975	SPRINGFIELD APP CON 121.1 290.5	CLNC DEL 123.725	UNICOM 122.8 (CTAF) 0
----------------------------	---	----------------------------	---------------------------------



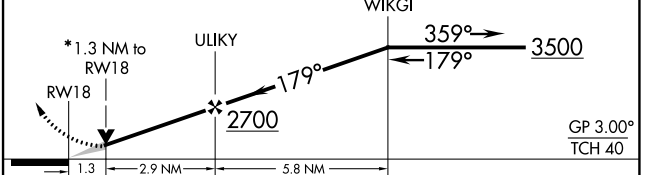
NC-3, 25 FEB 2021 to 25 MAR 2021

NC-3, 25 FEB 2021 to 25 MAR 2021

ELEV 1321	TDZE 1316
-----------	-----------



3500 KUPIW VGS1 and descent angles not coincident (VGS1 Angle 3.00/ TCH 40).
 *LNAV only, VDP NA when using Springfield-Branson National altimeter setting.
 4 NM Holding Pattern



CATEGORY	A	B	C	D
GLS PA DA	NA			
LNAV/VNAV DA	1937-2 1/4		621 (700-2 1/4)	
LNAV MDA	1760-1	444 (500-1)	1760-1 1/4	444 (500-1 1/4)
CIRCLING	1820-1	499 (500-1)	1820-1 1/2	1980-2 659 (700-2)

REIL Rwy 18 and 36
 MRL Rwy 18-36