

APP CRS 359°	Rwy Idg TDZE Apt Elev	5000 1321 1321
------------------------	-----------------------------	---

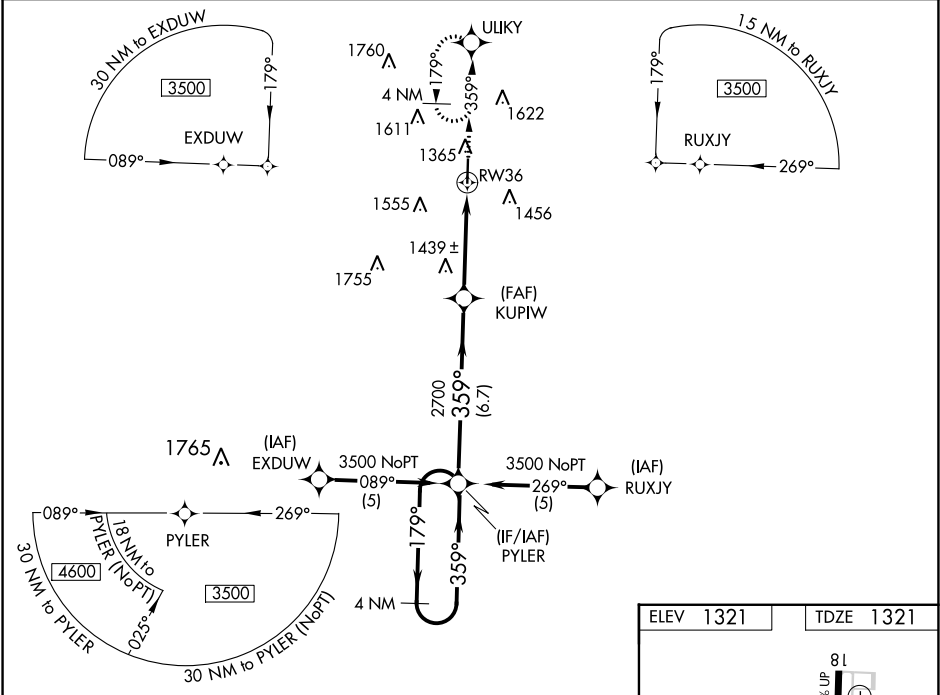
RNAV (GPS) RWY 36

FLOYD W JONES LEBANON (LBO)

- ▼ When local altimeter setting not received, use Springfield-Branson National altimeter setting and increase all DA/MDA 120 feet.
- ▲ NA Baro-VNAV NA when using Springfield-Branson National altimeter setting. Baro-VNAV NA below -17° C (1° F). DME/DME RNP-0.3 NA.

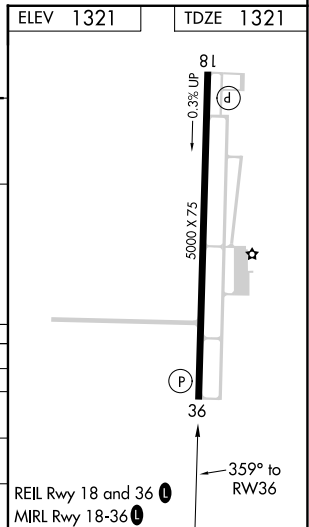
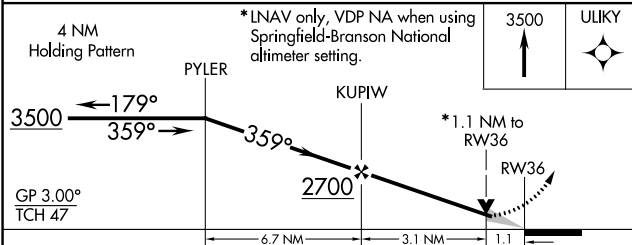
MISSED APPROACH: Climb to 3500 direct ULIKY and hold.

AWOS-3PT 118.975	SPRINGFIELD APP CON 121.1 290.5	CLNC DEL 123.725	UNICOM 122.8 (CTAF) 0
----------------------------	---	----------------------------	---------------------------------



NC-3, 25 FEB 2021 to 25 MAR 2021

NC-3, 25 FEB 2021 to 25 MAR 2021



CATEGORY	A	B	C	D
GLS PA DA	NA			
LNAV/VNAV DA	1680-1¼ 359 (400-1¼)			
LNAV MDA	1700-1 379 (400-1)		1700-1¼ 379 (400-1¼)	
CIRCLING	1820-1 499 (500-1)	1820-1½ 499 (500-1½)	1980-2 659 (700-2)	