

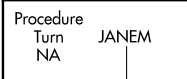
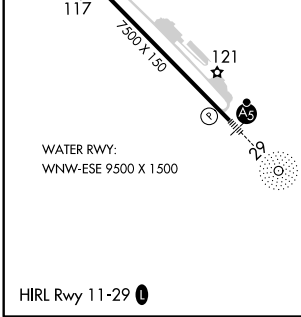
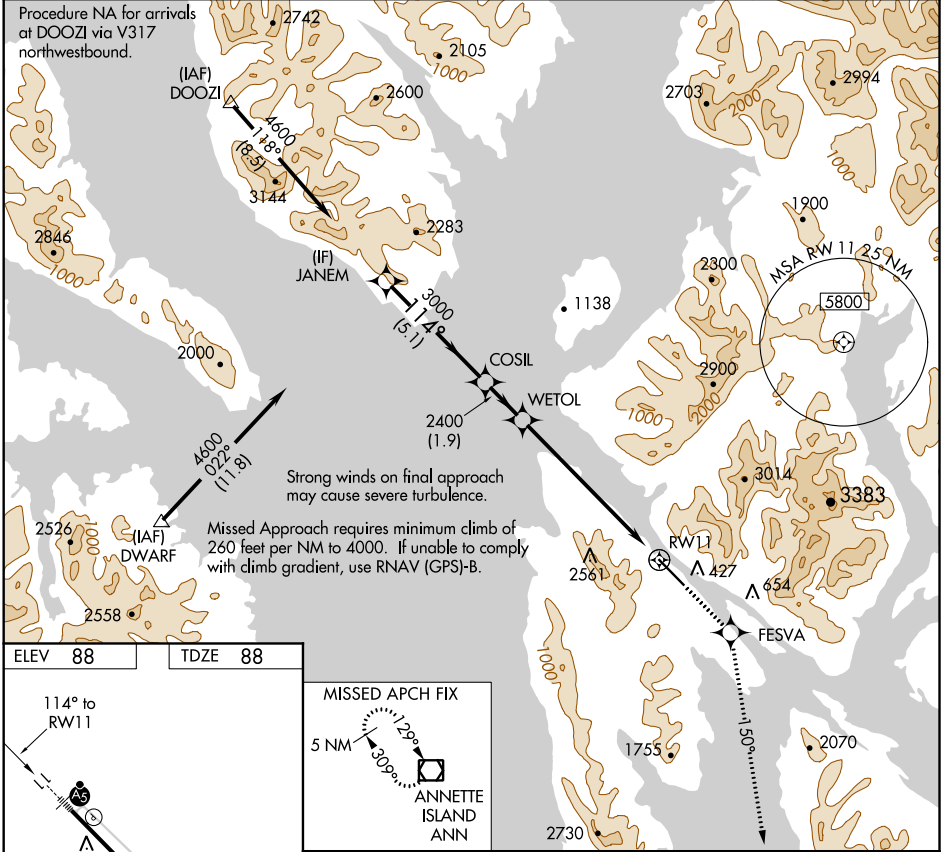
WAAS CH 58009 W11A	APP CRS 114°	Rwy Idg TDZE Apt Elev	7500 88 88
--	------------------------	-----------------------------	---------------------------------------

RNAV (GPS) RWY 11

KETCHIKAN INTL (KTN)(PAKT)

NA For inoperative MALSR, increase LPV DA visibility to RVR 6000. DME/DME RNP-0.3 NA.	MALSR	MISSED APPROACH: Climb to 5000 direct FESVA and via 150° track to ANN VOR/DME and hold.

AFIS 134.45	ANCHORAGE CENTER 118.5 284.6	KETCHIKAN RADIO 123.6 (CTAF) 0
-----------------------	--	--



Procedure Turn NA	JANEM	COSIL	WETOL	5000	FESVA	150° tr	ANN
	4600	3000	2400				
GP 3.00° TCH 50	5.1 NM		1.9 NM	6.8 NM			
CATEGORY	A	B	C	D			
LPV DA	438/40 350 (400-¾)						

AK, 25 FEB 2021 to 22 APR 2021

AK, 25 FEB 2021 to 22 APR 2021