

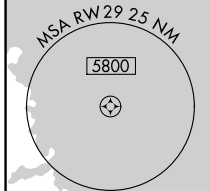
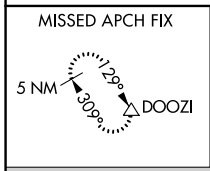
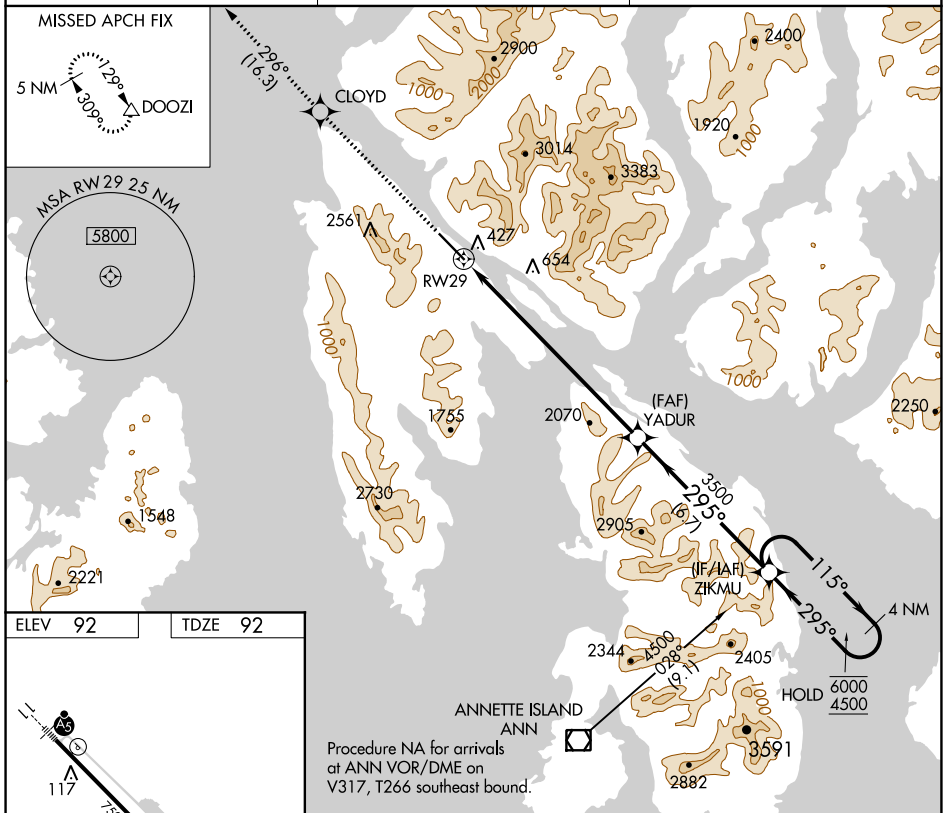
WAAS CH 40142 W29A	APP CRS 295°	Rwy Idg TDZE Apt Elev	7500 92 92
--	------------------------	-----------------------------	---------------------------------------

RNAV (GPS) RWY 29

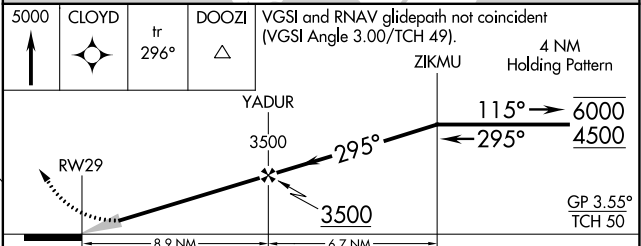
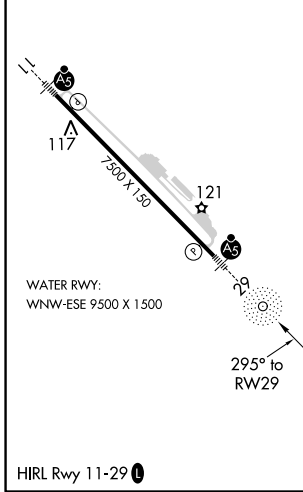
KETCHIKAN INTL (KTN)(PAKT)

RNP APCH.	MALS R	MISSED APPROACH: Climb to 5000 direct CLOYD and on track 296° to DOOZI and hold. *Missed approach requires minimum climb of 425 feet per NM to 2160; If unable to meet climb gradient, see RNAV (GPS)-B.
▼ ▲ NA For inop ALS, increase all Cats visibility to 1¼ SM.	AS	

AFIS 134.45	ANCHORAGE CENTER 118.5 284.6	KETCHIKAN RADIO 123.6 (CTAF) 0
-----------------------	--	--



ELEV 92	TDZE 92
---------	---------



CATEGORY	A	B	C	D
LPV DA*	722-1¾		630 (700-1¾)	NA

AK, 25 FEB 2021 to 22 APR 2021

AK, 25 FEB 2021 to 22 APR 2021