

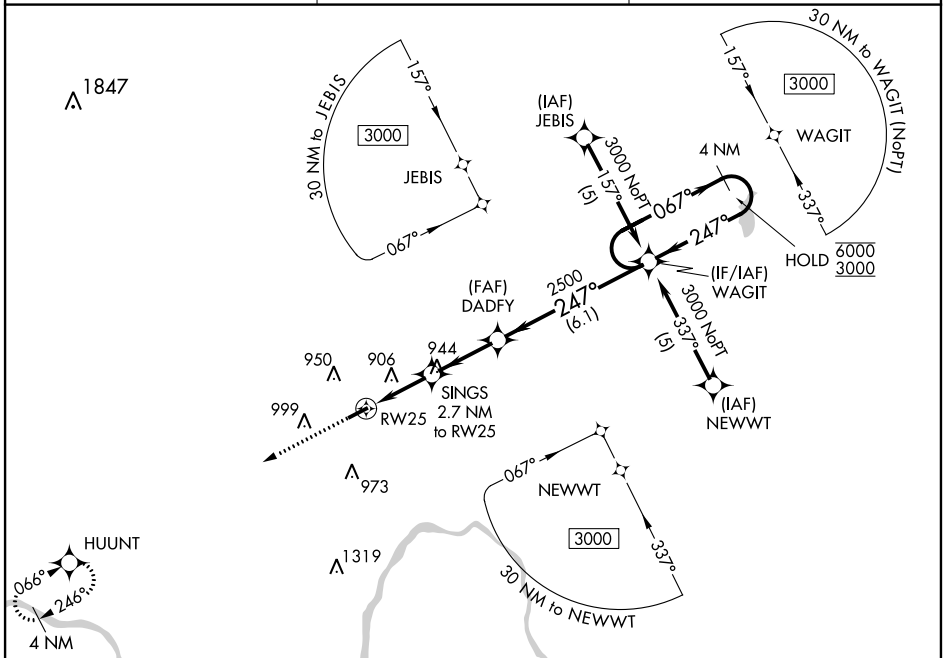
APP CRS 247°	Rwy Idg 4032
	TDZE 764
	Apt Elev 775

RNAV (GPS) RWY 25

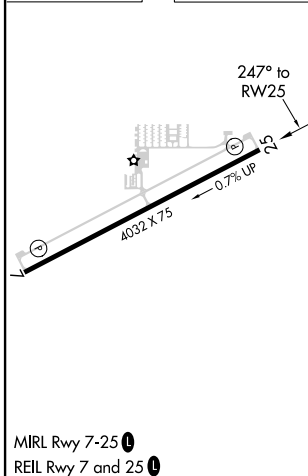
PAUL C MILLER - SPARTA (8D4)

RNP APCH.	Rwy 25 helicopter visibility reduction below 3/4 SM NA. When local altimeter setting not received, use Grand Rapids altimeter setting. VDP NA when using Grand Rapids altimeter setting.	MISSED APPROACH: Climb to 3000 direct HUUNT and hold.
AWOS-AV 132.95		

AWOS-AV 132.95	GREAT LAKES APP CON * 124.6 257.6	UNICOM 122.8 (CTAF) 0
--------------------------	---	---------------------------------



ELEV 775	TDZE 764
----------	----------



	3000	HUUNT	Visual Segment - Obstacles.	4 NM Holding Pattern
			SINGS 2.7 NM to RW25	DADFY
			1.2 NM to RW25	WAGIT
			1640	2500
			1.2 NM	1.5 NM
			2.6 NM	6.1 NM
CATEGORY	A	B	C	D
LNAV MDA	1240-1	476 (500-1)	NA	
CIRCLING	1300-1 525 (600-1)	1340-1 565 (600-1)	NA	

EC-1, 25 FEB 2021 to 25 MAR 2021

EC-1, 25 FEB 2021 to 25 MAR 2021