

WAAS CH 72630 W11A	APP CRS 111°	Rwy Idg TDZE 1152 Apt Elev 1171	5001
--	------------------------	---	-------------

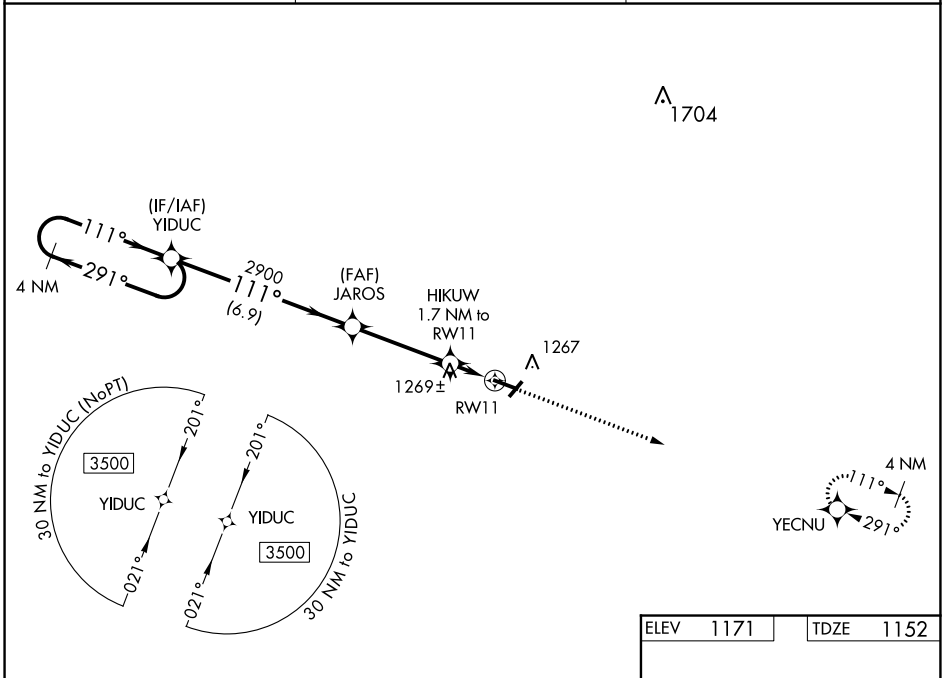
RNAV (GPS) RWY 11

IOWA COUNTY (MRJ)

⚠ Baro-VNAV NA when using Platteville altimeter setting. For uncompensated Baro-VNAV systems, LNAV/VNAV NA below -17°C (2°F) or above 54°C (130°F). When local altimeter setting not received, use Platteville altimeter setting and increase all DA 55 feet, increase LPV and LNAV/VNAV all Cats visibility 1/8 mile, increase all MDA 60 feet, and LNAV Cat C visibility 1/4 mile. DME/DME RNP-0.3 NA.

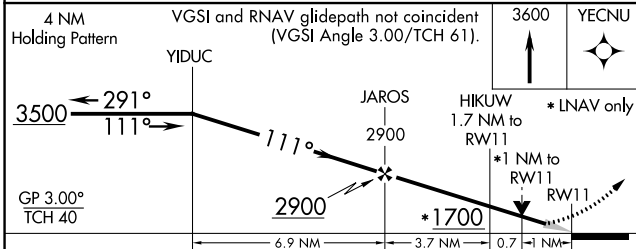
MISSED APPROACH:
Climb to 3600 direct YECNU and hold.

AWOS-3 118.525	CHICAGO CENTER 133.95 281.4	UNICOM 122.8 (CTAF) 0
--------------------------	---------------------------------------	---------------------------------

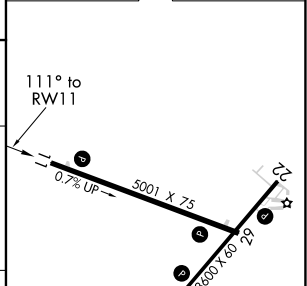


EC-3, 25 FEB 2021 to 25 MAR 2021

EC-3, 25 FEB 2021 to 25 MAR 2021



ELEV 1171	TDZE 1152
-----------	-----------



CATEGORY	A	B	C	D
LPV DA	1352-3/4	200 (200-3/4)		NA
LNAV/VNAV DA	1402-7/8	250 (300-7/8)		NA
LNAV MDA	1520-1	368 (400-1)	1520-1 1/8 368 (400-1 1/8)	NA
CIRCLING	1620-1 449 (500-1)	1640-1 469 (500-1)	1640-1 1/2 469 (500-1 1/2)	NA

REIL Rwy 11 and 29 0
MIRL Rwy 4-22 and 11-29 0