

WAAS CH 57930 W22A	APP CRS 220°	Rwy Idg TDZE 1171 Apt Elev 1171	3600
--	------------------------	---	-------------

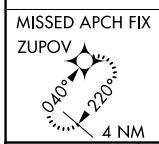
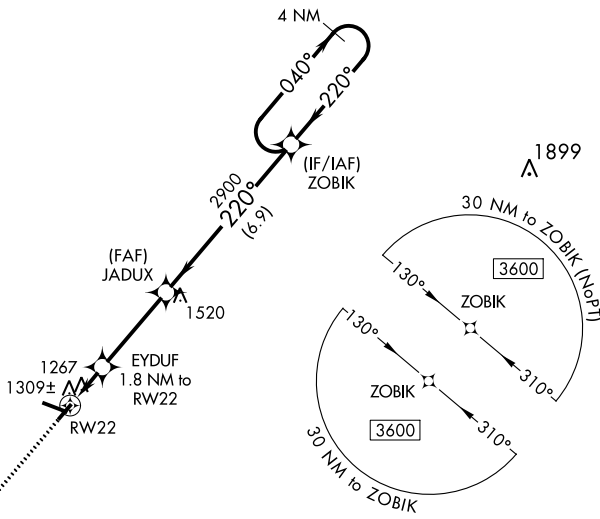
RNAV (GPS) RWY 22

IOWA COUNTY (MR.J)

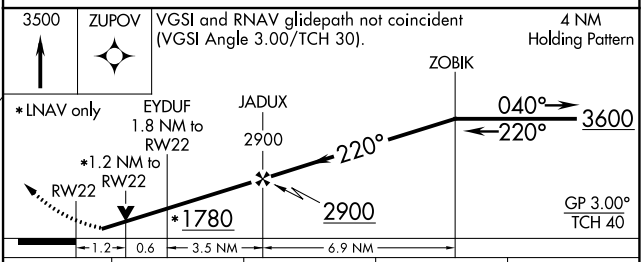
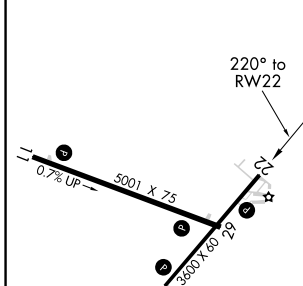
Baro-VNAV NA when using Platteville altimeter setting. For uncompensated Baro-VNAV systems, LNAV/VNAV NA below -17°C (2°F) or above 54°C (130°F). When local altimeter setting not received, use Platteville altimeter setting and increase all DA 55 feet, increase LPV all Cats visibility 1/8 mile and LNAV/VNAV all Cats visibility 1/4 mile, increase all MDA 60 feet, and LNAV Cat C visibility 1/4 mile. DME/DME RNP-0.3 NA. Helicopter visibility reduction below 3/4 SM NA.

MISSED APPROACH:
Climb to 3500 direct ZUPOV and hold.

AWOS-3 118.525	CHICAGO CENTER 133.95 281.4	UNICOM 122.8 (CTAF) 1
--------------------------	---------------------------------------	---------------------------------



ELEV 1171	TDZE 1171
-----------	-----------



CATEGORY	A	B	C	D
LPV DA	1371-3/4	200 (200-3/4)		NA
LNAV/VNAV DA	1479-1	308 (400-1)		NA
LNAV MDA	1580-1	409 (500-1)	1580-1 1/8 409 (500-1 1/8)	NA
CIRCLING	1620-1 449 (500-1)	1640-1 469 (500-1)	1640-1 1/2 469 (500-1 1/2)	NA

REIL Rwy 11 and 29
MIRL Rwy 4-22 and 11-29

EC-3, 25 FEB 2021 to 25 MAR 2021

EC-3, 25 FEB 2021 to 25 MAR 2021