

WAAS CH 93530 W04A	APP CRS 040°	Rwy Idg TDZE 1168 Apt Elev 1171	3600
--	------------------------	---	-------------

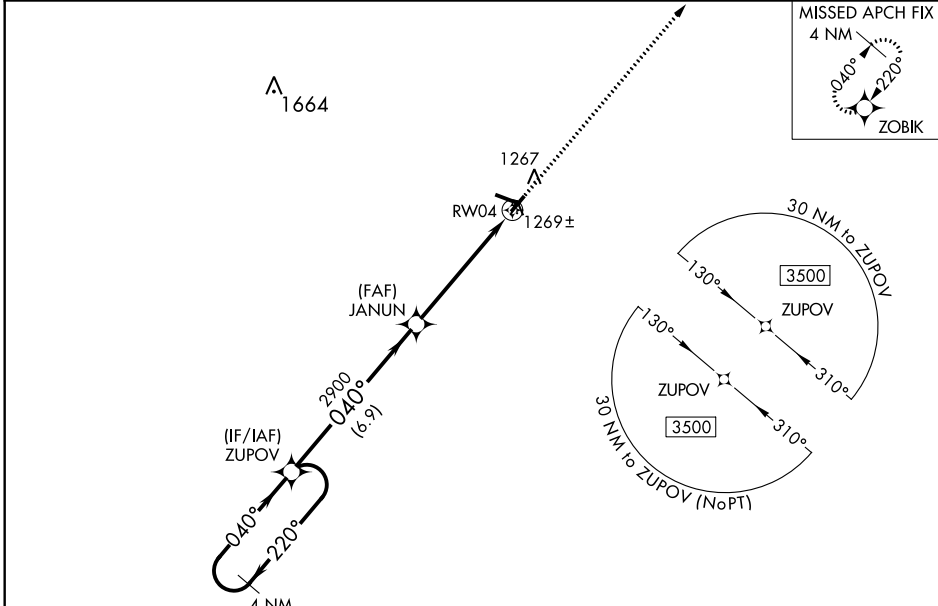
RNAV (GPS) RWY 4

IOWA COUNTY (MR.J)

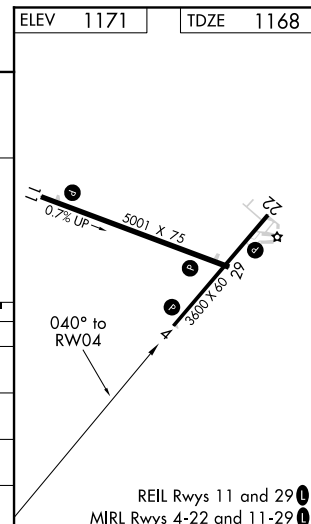
Baro-VNAV NA when using Platteville altimeter setting. For uncompensated Baro-VNAV systems, LNAV/VNAV NA below -17°C (2°F) or above 54°C (130°F). When local altimeter setting not received, use Platteville altimeter setting and increase all DA 55 feet, increase LPV all Cats visibility 1/8 mile and LNAV/VNAV all Cats visibility 1/4 mile, increase all MDA 60 feet, and LNAV Cat C visibility 1/4 mile. DME/DME RNP-0.3 NA.

MISSED APPROACH:
Climb to 3600 direct ZOBIK and hold.

AWOS-3 118.525	CHICAGO CENTER 133.95 281.4	UNICOM 122.8 (CTAF) 1
--------------------------	---------------------------------------	--



4 NM Holding Pattern		VGSI and RNAV glidepath not coincident (VGSI Angle 3.00/TCH 31).		ELEV 1171	TDZE 1168
ZUPOV		JANUN		3600	ZOBIK
GP 3.00° TCH 40		*1.2 NM to RW04		* LNAV only	
6.9 NM		4.1 NM		1.2 NM	
CATEGORY	A	B	C	D	
LPV DA	1368-3/4	200 (200-3/4)			NA
LNAV/VNAV DA	1443-7/8	275 (300-7/8)			NA
LNAV MDA	1580-1	412 (500-1)	1580-1 1/8 412 (500-1 1/8)		NA
CIRCLING	1620-1 449 (500-1)	1640-1 469 (500-1)	1640-1 1/2 469 (500-1 1/2)		NA



EC-3, 25 FEB 2021 to 25 MAR 2021

EC-3, 25 FEB 2021 to 25 MAR 2021