

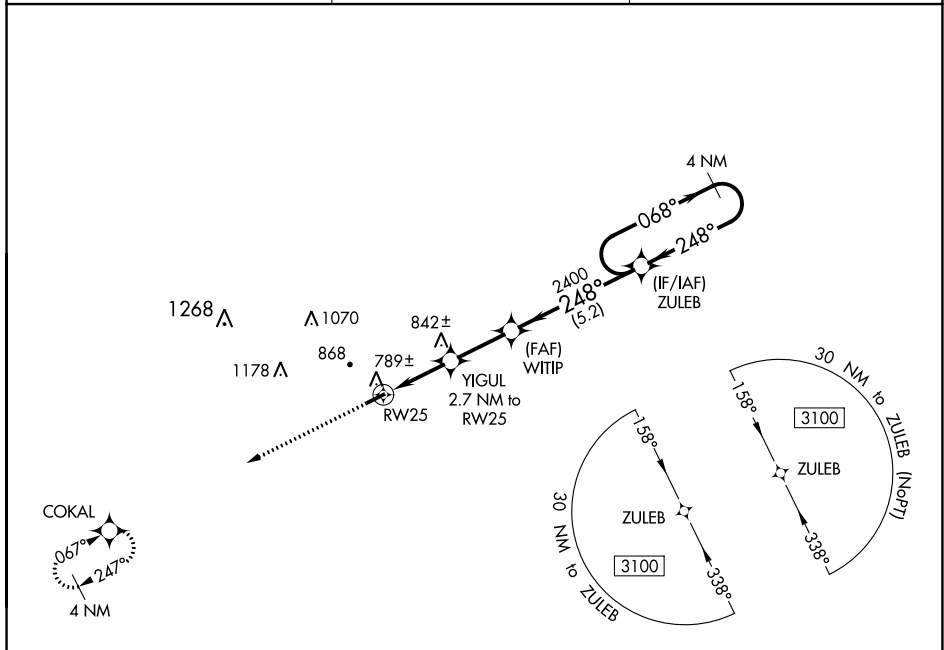
WAAS CH 90431 W25A	APP CRS 248°	Rwy Idg TDZE Apt Elev	4500 681 692
--	------------------------	-----------------------------	---

RNAV (GPS) RWY 25

RUSSELLVILLE-LOGAN COUNTY (4M7)

NA	Baro-VNAV NA, DME/DME RNP-0.3 NA. Use Springfield altimeter setting. Rwy 25 helicopter visibility reduction below 1 SM NA. Straight-in Rwy 25 NA at night, Circling Rwy 25 NA at night.	MISSED APPROACH: Climb to 3100 direct COKAL and hold.
----	---	--

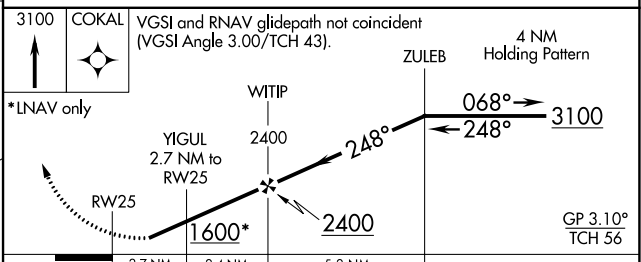
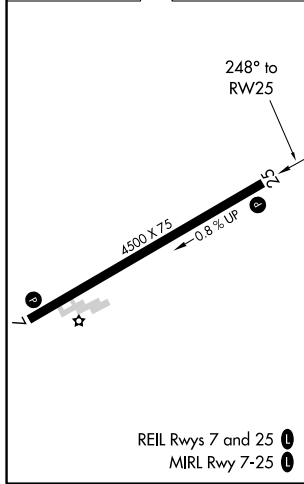
M91 AWOS-3 120.675	MEMPHIS CENTER 133.85 317.6	UNICOM 122.7 (CTAF) 0
------------------------------	---------------------------------------	---------------------------------



SE-1, 25 FEB 2021 to 25 MAR 2021

SE-1, 25 FEB 2021 to 25 MAR 2021

ELEV 692	TDZE 681
----------	----------



CATEGORY	A	B	C	D
LPV DA		985-1	304 (300-1)	
LNAV/VNAV DA		1001-1½	320 (400-1½)	
LNAV MDA	1080-1	399 (400-1)	1080-1½	399 (400-1½)
CIRCLING	1320-1	628 (700-1)	1320-1¾ 628 (700-1¾)	1520-2¾ 828 (900-2¾)