

WAAS CH 50431 W07A	APP CRS 067°	Rwy Idg TDZE Apt Elev	4500 692 692
--	------------------------	-----------------------------	---

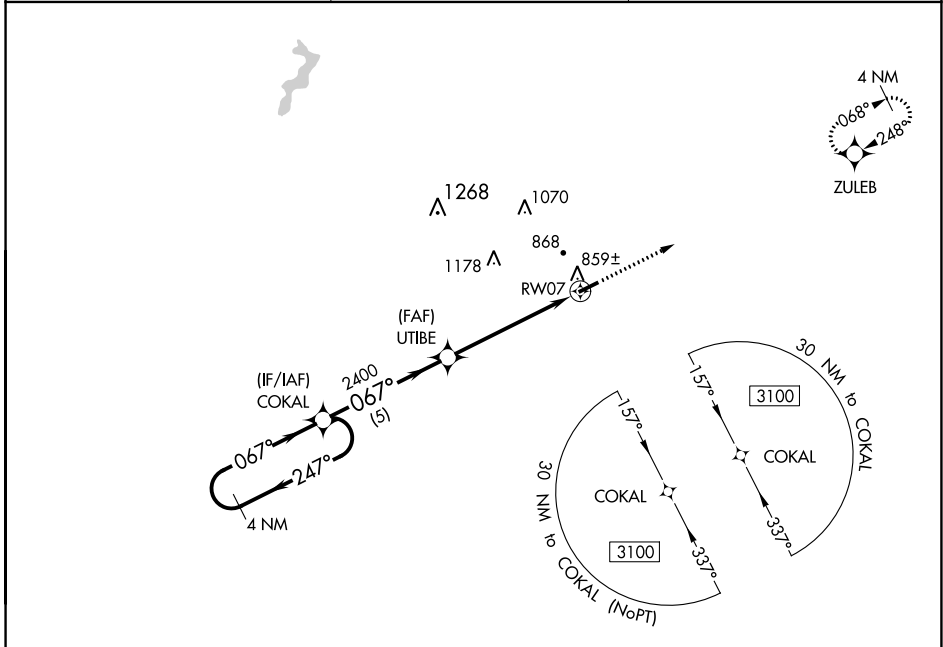
RNAV (GPS) RWY 7

RUSSELLVILLE-LOGAN COUNTY (4M7)

NA Baro-VNAV NA. DME/DME RNP-0.3 NA. Use Springfield altimeter setting. Circling Rwy 25 NA at night.

MISSED APPROACH: Climb to 3100 direct ZULEB and hold.

M91 AWOS-3 120.675	MEMPHIS CENTER 133.85 317.6	UNICOM 122.7 (CTAF) 0
------------------------------	---------------------------------------	---------------------------------



SE-1, 25 FEB 2021 to 25 MAR 2021

SE-1, 25 FEB 2021 to 25 MAR 2021

4 NM Holding Pattern		COKAL		UTIBE		RWY 07	
3100 ← 247°		← 067°		2400		5.2 NM	
GP 3.00°		TCH 40					
CATEGORY	A	B	C	D			
LPV DA	982-1		290 (300-1)				
LNAV/VNAV DA	1060-1¼		368 (400-1¼)				
LNAV MDA	1160-1	468 (500-1)		1160-1¾	468 (500-1½)		
C CIRCLING	1320-1	628 (700-1)		1320-1¾	1520-2¾		
				628 (700-1¾)	828 (900-2¾)		

