

APP CRS 230°	Rwy Idg 4400
	TDZE 58
	Apt Elev 59

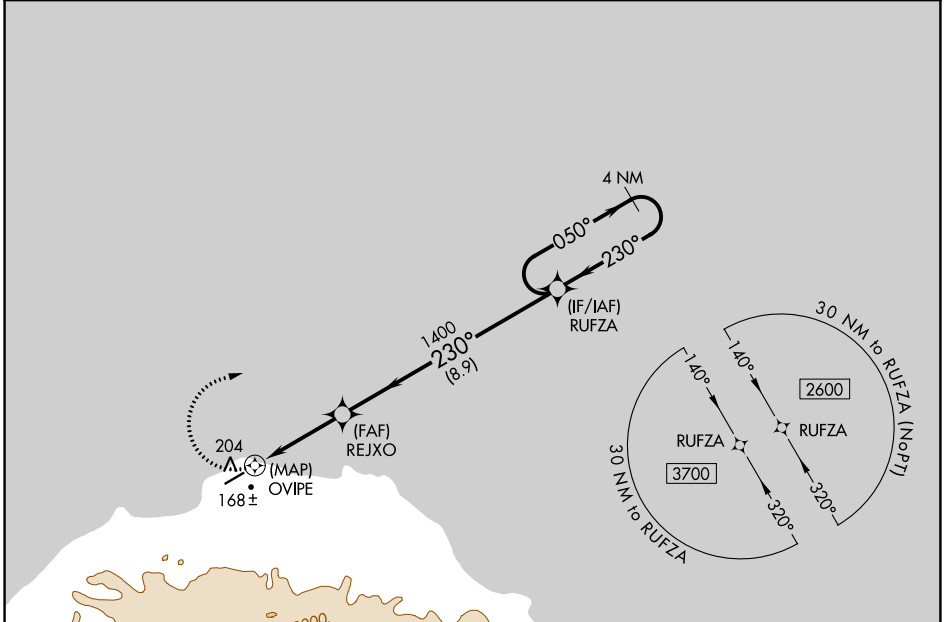
RNAV (GPS) RWY 23

SAVOONGA (SVA) (PASA)

⚠ DME/DME RNP-0.3 NA. When local altimeter setting not received, use Gambell altimeter setting and increase all MDA 100 feet, and increase LNAV visibility Cat C and D ¼ mile and Circling Cat C visibility ½ mile. Circling NA southeast of Rwy 5-23. VDP NA with Gambell altimeter setting.

MISSED APPROACH: Climbing right turn to 2600 direct RUFZA and hold.

AWOS-3P 121.3	ANCHORAGE CENTER 132.2 281.4	NOME RADIO 122.3	CTAF 122.7
-------------------------	--	----------------------------	----------------------



AK, 25 FEB 2021 to 22 APR 2021

AK, 25 FEB 2021 to 22 APR 2021

