

APP CRS	Rwy Idg	<b>4400</b>
<b>069°</b>	TDZE	<b>59</b>
	Apt Elev	<b>59</b>

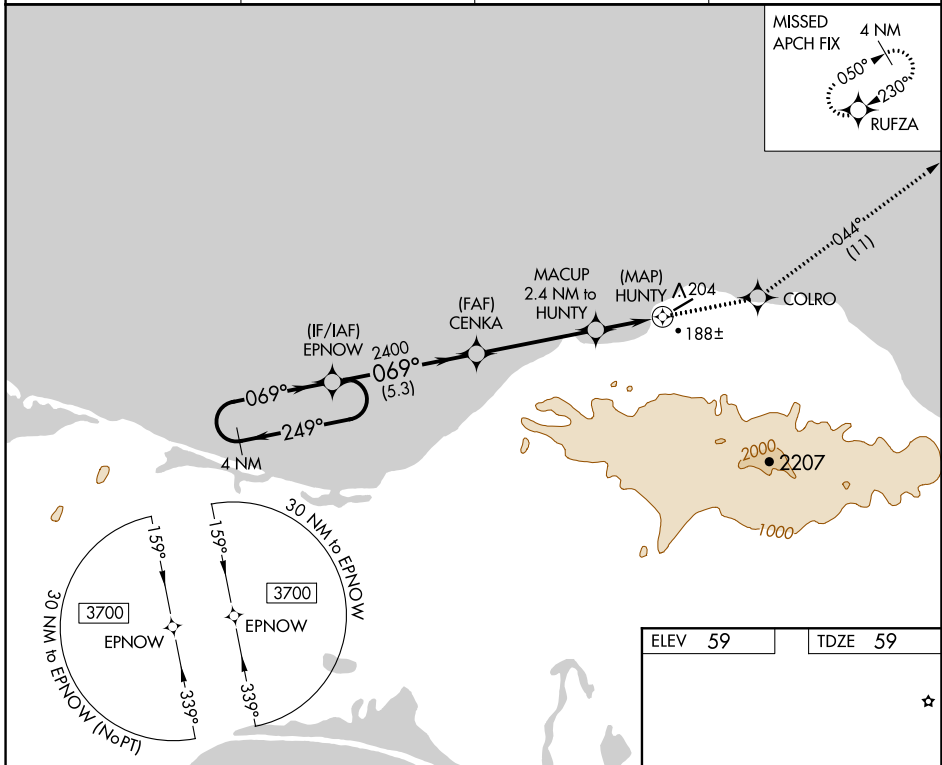
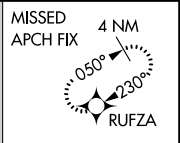
# RNAV (GPS) RWY 5

SAVOONGA (SVA) (PASA)

**⚠** Circling NA southeast of Rwy 5-23. DME/DME RNP-0.3 NA. When local altimeter setting not received, use Gambell altimeter setting and increase all MDA 100 feet, and increase visibility LNAV Cat C/D 3/8 mile and Circling Cat C 1/4 mile. VDP NA with Gambell altimeter setting.

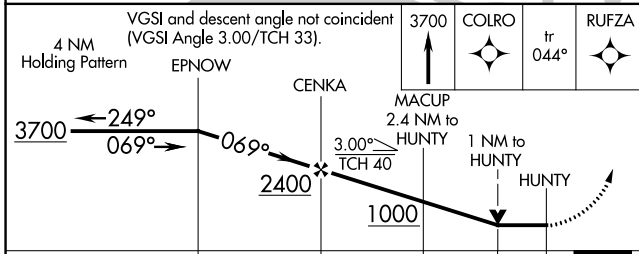
**MISSED APPROACH:** Climb to 3700 direct COLRO and on track 044° to RUFZA and hold, continue climb-in-hold to 3700.

AWOS-3P <b>121.3</b>	ANCHORAGE CENTER <b>132.2 281.4</b>	NOME RADIO <b>122.3</b>	CTAF <b>122.7</b>
-------------------------	--	----------------------------	----------------------

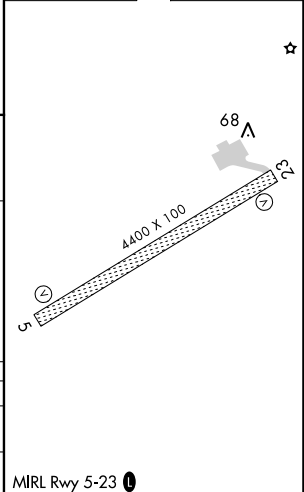


AK, 25 FEB 2021 to 22 APR 2021

AK, 25 FEB 2021 to 22 APR 2021



ELEV 59	TDZE 59
---------	---------



CATEGORY	A	B	C	D
LNAV MDA	560-1 501 (600-1)		560-1 3/8 501 (600-1 3/8)	
CIRCLING	560-1 501 (600-1)		560-1 1/2 501 (600-1 1/2)	620-2 561 (600-2)

MIRL Rwy 5-23