

VOR/DME ULL 117.3 Chan 120	APP CRS 229°	Rwy Idg 4400 TDZE 58 Apt Elev 59
--	------------------------	---

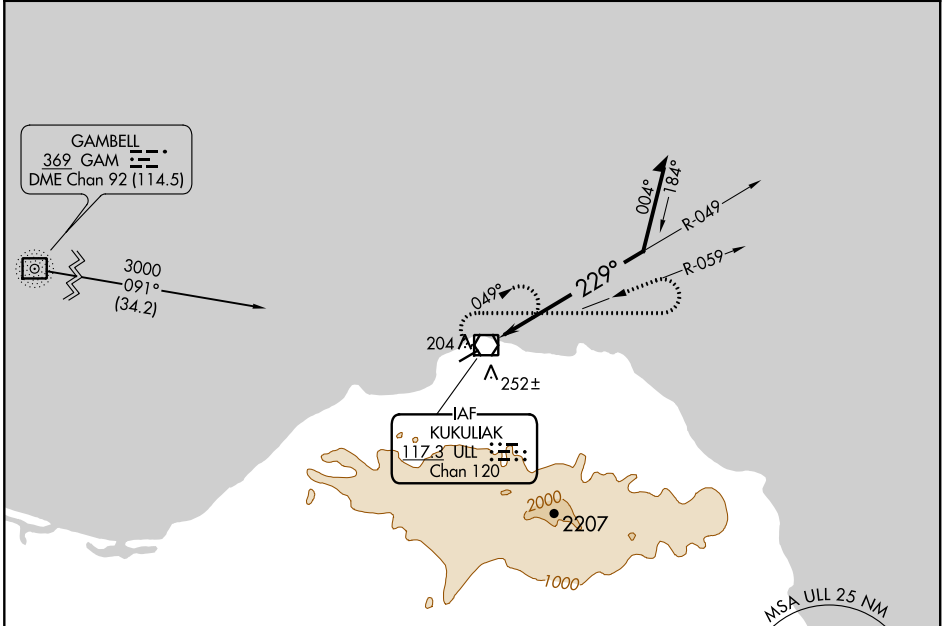
VOR RWY 23

SAVOONGA (SVA) (PASA)

⚠ Circling NA southeast of Rwy 5-23. When local altimeter setting not received, use Gambell altimeter setting and increase all MDA 100 feet, and increase S-23 Cat C-D and Circling Cat C-D visibility ¼ mile. VDP NA with Gambell altimeter setting.

MISSED APPROACH: Climbing right turn to 3300 via heading 090° and ULL VOR/DME R-059 then left turn via ULL VOR/DME R-059 to ULL VOR/DME and hold.

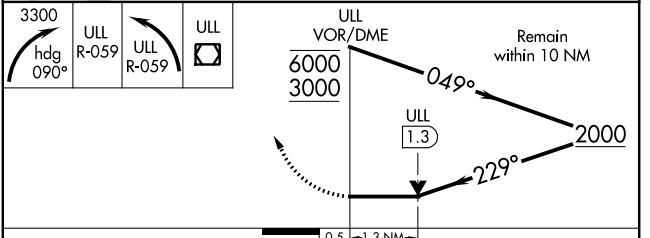
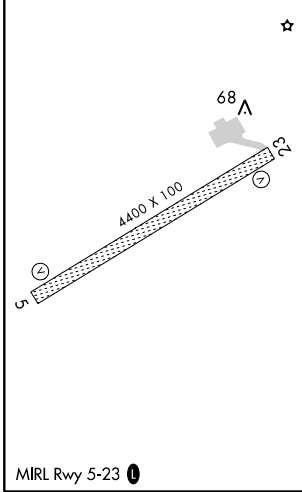
AWOS-3P 121.3	ANCHORAGE CENTER 132.2 281.4	NOME RADIO 122.3	CTAF 122.7 ⓪
-------------------------	--	----------------------------	-------------------------------



AK, 25 FEB 2021 to 22 APR 2021

AK, 25 FEB 2021 to 22 APR 2021

ELEV 59	TDZE 58
---------	---------



CATEGORY	A	B	C	D
S-23	660-1 602 (700-1)		660-1¾ 602 (700-1¾)	660-2 602 (700-2)
CIRCLING	660-1 601 (700-1)		660-1¾ 601 (700-1¾)	660-2 601 (700-2)