

VOR/DME ULL <b>117.3</b> Chan <b>120</b>	APP CRS <b>229°</b>	Rwy Idg <b>4400</b> TDZE <b>58</b> Apt Elev <b>59</b>
--	------------------------	---

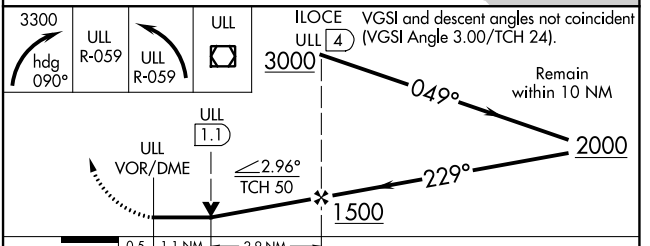
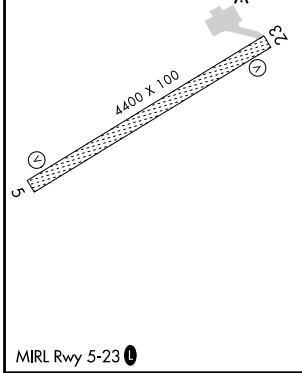
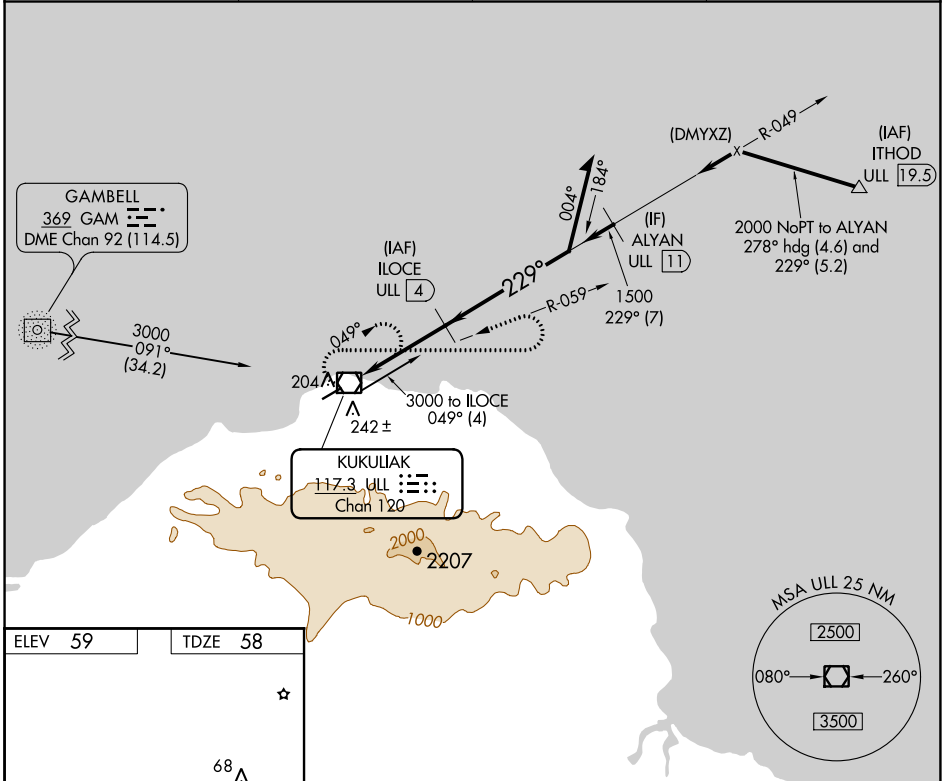
# VOR/DME RWY 23

SAVOONGA (SVA) (PASA)

**⚠** Circling NA southeast of Rwy 5-23. When local altimeter setting not received, use Gambell altimeter setting and increase all MDA 100 feet, and increase S-23 Cat C-D and Circling Cat C visibility ¼ mile. VDP NA with Gambell altimeter setting.

**MISSED APPROACH:** Climbing right turn to 3300 via heading 090° and via ULL VOR/DME R-059 then left turn via ULL VOR/DME R-059 to ULL VOR/DME and hold.

AWOS-3P <b>121.3</b>	ANCHORAGE CENTER <b>132.2 281.4</b>	NOME RADIO <b>122.3</b>	CTAF <b>122.7 0</b>
-------------------------	--	----------------------------	------------------------



CATEGORY	A	B	C	D
S-23	600-1 542 (600-1)	600-1½ 542 (600-1½)	600-1¾ 542 (600-1¾)	600-1¾ 542 (600-1¾)
CIRCLING	600-1 541 (600-1)	600-1½ 541 (600-1½)	600-1¾ 561 (600-2)	620-2 561 (600-2)

AK, 25 FEB 2021 to 22 APR 2021

AK, 25 FEB 2021 to 22 APR 2021