

WAAS CH 90442 W10A	APP CRS 101°	Rwy Idg TDZE Apt Elev	4000 728 732
--	------------------------	-----------------------------	---

RNAV (GPS) RWY 10

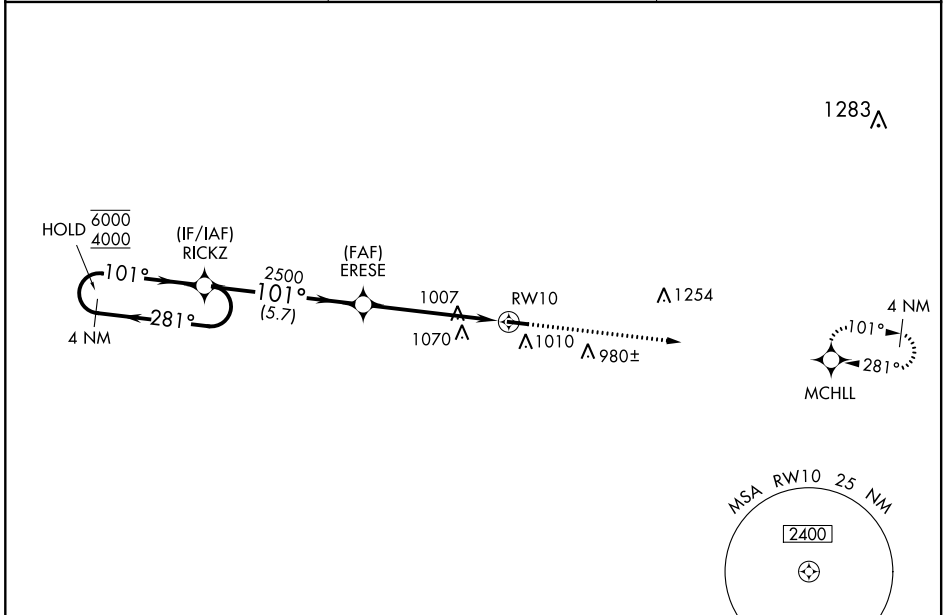
BRECKINRIDGE COUNTY (I93)

RNP APCH.

NA Rwy 10 helicopter visibility reduction below $\frac{3}{4}$ SM NA. Baro-VNAV NA. Use Fort Knox altimeter setting, when not received, use Elizabethtown altimeter setting and increase LPV DA to 1043, LNAV/VNAV DA to 1191 and all MDA 20 feet.

MISSED APPROACH: Climb to 4000 direct MCHLL and hold, continue climb-in-hold to 4000.

FTK ASOS ★ 109.6	LOUISVILLE APP CON 132.075 327.0	CTAF 122.9 0
----------------------------	--	------------------------



SE-1, 25 FEB 2021 to 25 MAR 2021

SE-1, 25 FEB 2021 to 25 MAR 2021

ELEV 732	TDZE 728
----------	----------

4000	MCHLL	VGSI and RNAV glidepath not coincident (VGSI Angle 3.10/TCH 34).		4 NM Holding Pattern
		<p>RICKZ</p> <p>← 281° 6000</p> <p>101° → 4000</p> <p>GP 3.10° TCH 34</p>		
CATEGORY	A	B	C	D
LPV DA		1036-1	308 (400-1)	
LNAV/VNAV DA		1184-1 $\frac{3}{8}$	456 (500-1 $\frac{3}{8}$)	
LNAV MDA	1380-1	652 (700-1)	1380-1 $\frac{7}{8}$	652 (700-1 $\frac{7}{8}$)
C CIRCLING	1380-1 648 (700-1)	1480-1 748 (800-1)	1480-2 $\frac{1}{4}$ 748 (800-2 $\frac{1}{4}$)	1480-2 $\frac{1}{2}$ 748 (800-2 $\frac{1}{2}$)