

WAAS CH <b>53539</b> W15A	APP CRS <b>136°</b>	Rwy Idg TDZE Apt Elev	<b>2910</b> <b>1275</b> <b>1275</b>
---------------------------------	------------------------	-----------------------------	---

# RNAV (GPS) RWY 15

HEALY RIVER (HRR) (PAHV)

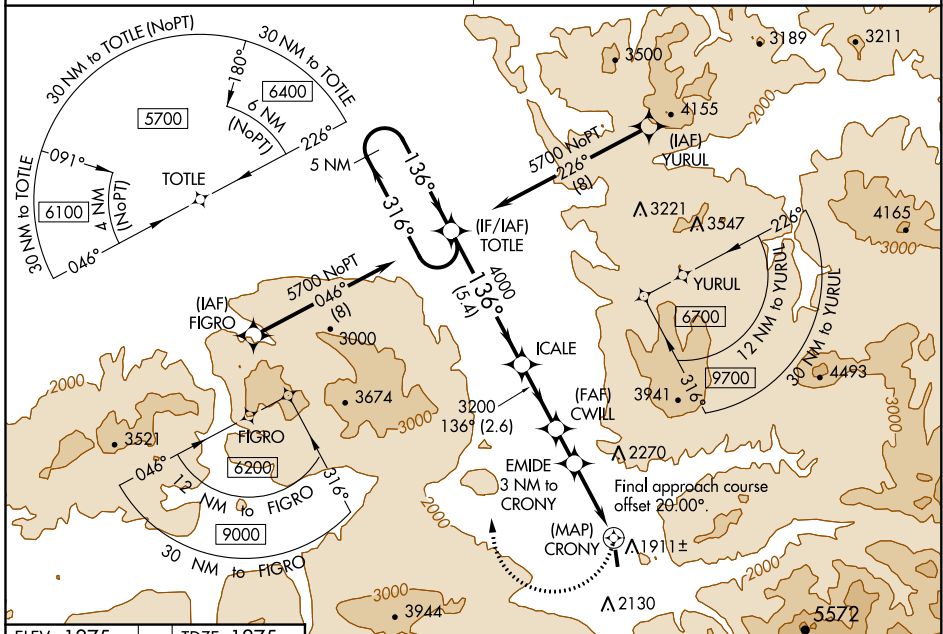
**V** DME/DME RNP-0.3 NA. Procedure NA at night. Use McKinley Park altimeter setting; when not received, procedure NA. Rwy 15 helicopter visibility reduction below 1 SM NA.

**NA** MISSED APPROACH: Climbing right turn to 5700 direct TOTLE and hold, continue climb-in-hold to 5700.

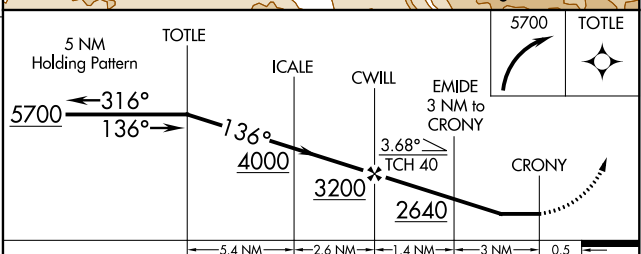
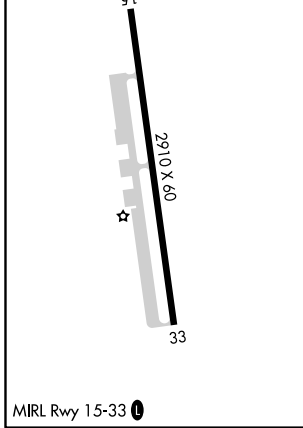
**-11°C** \*Missed approach requires minimum climb of 325 feet per NM to 3900.

ANCHORAGE CENTER **120.9 319.2**

CTAF **122.90**



ELEV 1275	TDZE 1275
-----------	-----------



CATEGORY	A	B	C	D
LP MDA*	2120-1 845 (900-1)	2120-1¼ 845 (900-1¼)		NA
LP MDA	2240-1¼ 965 (1000-1¼)	2240-1½ 965 (1000-1½)		NA
LNAV MDA*	2260-1¼ 985 (1000-1¼)	2260-1½ 985 (1000-1½)		NA
LNAV MDA	2580-1¼ 1305 (1400-1¼)	2580-1½ 1305 (1400-1½)		NA
<b>C</b> CIRCLING	2660-1¼ 1385 (1400-1¼)	2700-1½ 1425 (1500-1½)		NA

AK, 25 FEB 2021 to 22 APR 2021

AK, 25 FEB 2021 to 22 APR 2021