

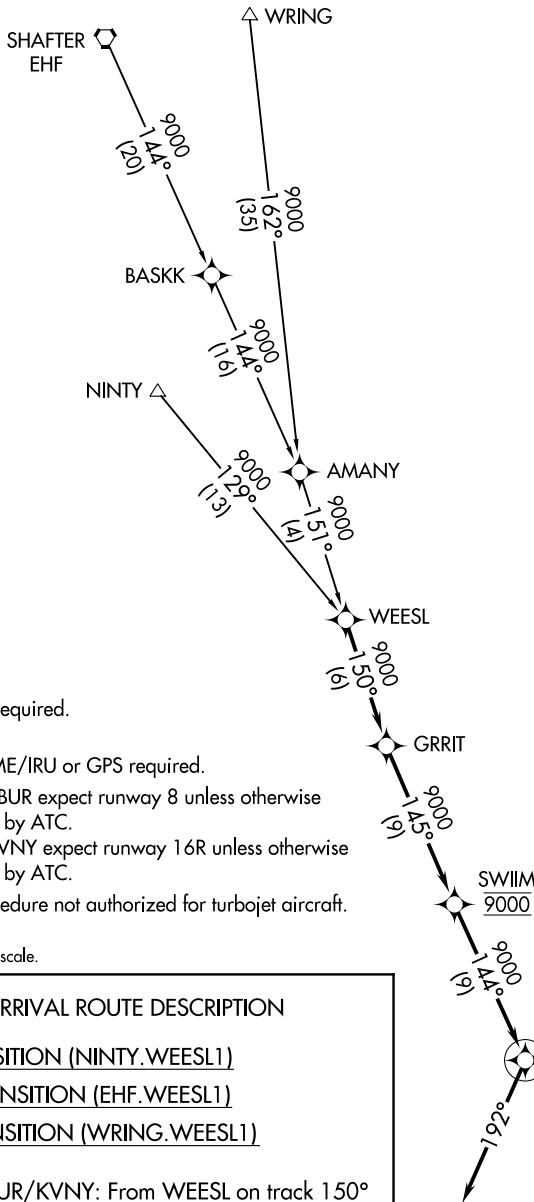
(WEESL.WEESL1) 17117

WEESL ONE ARRIVAL (RNAV)

AL-67 (FAA)

BURBANK, CALIFORNIA

SOCAL APP CON 120.4 360.6
 BOB HOPE D-ATIS 134.5
 BURBANK TOWER 118.7 254.3
 VAN NUYS ATIS 127.55
 VAN NUYS TOWER* 119.3 239.0



- NOTE: RADAR required.
- NOTE: RNAV 1.
- NOTE: DME/DME/IRU or GPS required.
- NOTE: Landing BUR expect runway 8 unless otherwise assigned by ATC.
- NOTE: Landing VNY expect runway 16R unless otherwise assigned by ATC.
- NOTE: This procedure not authorized for turbojet aircraft.

NOTE: Chart not to scale.

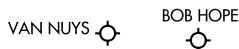
ARRIVAL ROUTE DESCRIPTION

NINTY TRANSITION (NINTY.WEESL1)

SHAFTER TRANSITION (EHF.WEESL1)

WRING TRANSITION (WRING.WEESL1)

LANDING KBUR/KVNY: From WEESL on track 150° to GRRIT, then on track 145° to cross SWIIM at 9000, then on track 144° to cross LYNXX at 9000, then on track 192°. Expect RADAR vectors to final approach course.



WEESL ONE ARRIVAL (RNAV)

(WEESL.WEESL1) 10NOV15

BURBANK, CALIFORNIA

SW-3, 25 MAR 2021 to 22 APR 2021

SW-3, 25 MAR 2021 to 22 APR 2021