

COLUMBUS, MISSISSIPPI

HI-ILS or LOC Z RWY 31C

LOC I-TBB 108.7	APCH CRS 315°	Rwy Ldg TDZE Arprt Elev	31C 12,004 213 218	31R 8001 218 218
---------------------------	-------------------------	-------------------------------	--	--

JAL-91 [USAF]

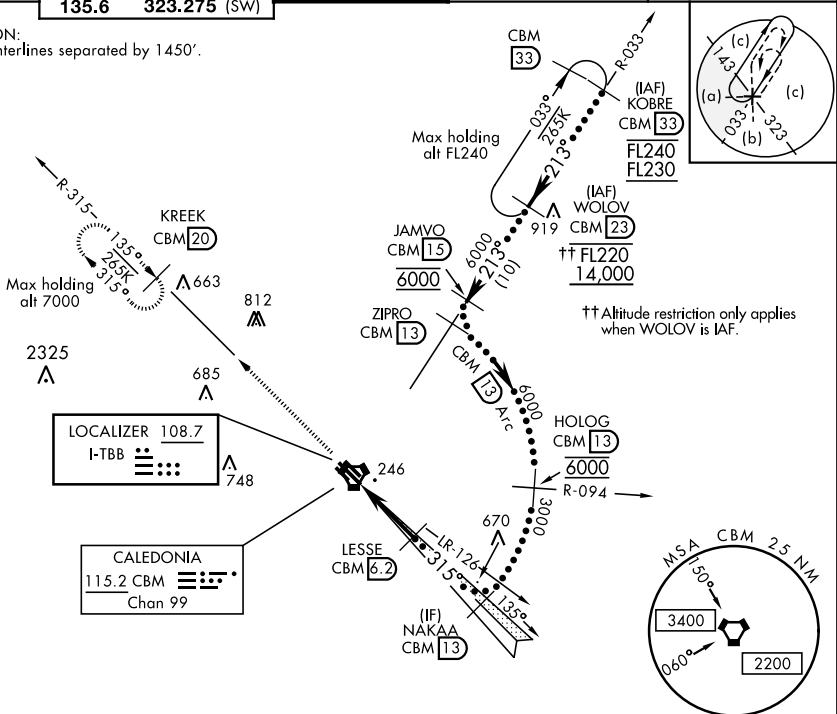
COLUMBUS AFB (KCBM)

▼ * When ALS inop, increase RVR to 40, vis to ¾ mile.
 ** When ALS inop, increase RVR to 55, vis to 1 mile.

ALSF-1 (A1) MISSED APPROACH: Climb heading 315° to intercept the VOR/TAC CBM R-315 outbound to KREEK (CBM R-315/20) and hold. Maintain 4000.

ATIS 115.2 273.5	COLUMBUS APP CON 126.075 239.25 (N) 134.55 350.3 (SE) 135.6 323.275 (SW)	COLUMBUS TOWER 126.65 379.925	GND CON 121.9 275.8	CLNC DEL 269.55
----------------------------	--	---	-------------------------------	---------------------------

*** CAUTION:
Rwy centerlines separated by 1450'.

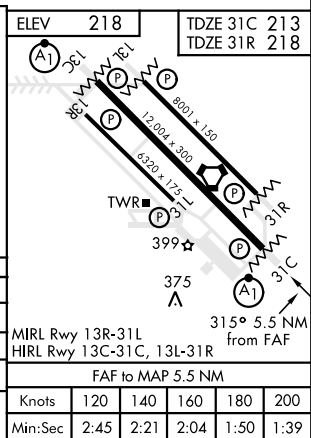


SC-4, 25 MAR 2021 to 22 APR 2021

SC-4, 25 MAR 2021 to 22 APR 2021

EMERG SAFE ALT 100 NM 3700

4000	hdg 315°	CBM R-315	KREEK CBM 20	NAKAA 13
↑LOC Only				
VORTAC	LOC MAP Z	↑1.7	LESSE 6.2	3000
		GS 3.00° TCH 48		2000
-5.5 NM				
CATEGORY	C	D	E	
S-ILS 31C*	413/24	200 (200-½)		
S-LOC 31C**	580/35	367 (400-½)		
SIDESTEP RWY 31R***	580/55	362 (400-1)		
CIRCLING	760-1½ 542 (600-1½)	780-2 562 (600-2)	1220-3 1002 (1100-3)	



COLUMBUS, MISSISSIPPI
Amdt 1 13AUG20

33° 39' N-88° 27' W

COLUMBUS AFB (KCBM)

HI-ILS or LOC Z RWY 31C