

COLUMBUS, MISSISSIPPI

RNAV (GPS) RWY 13C

APCH CRS 135°	Rwy Idg 12,004
	TDZE 196
	Arprt Elev 218

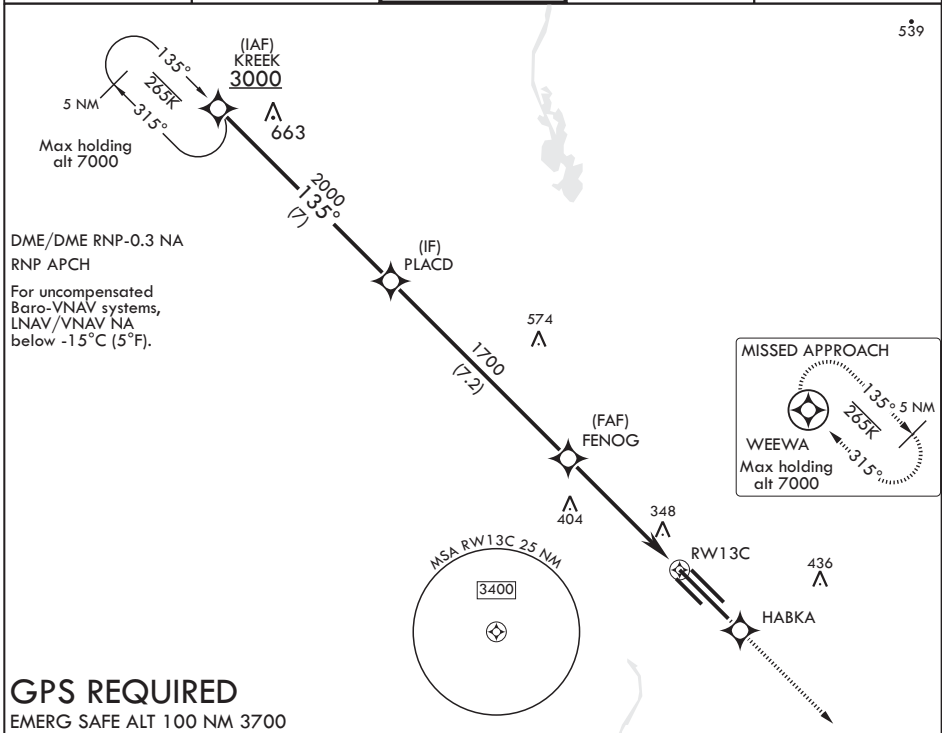
AL-91 (USAF)

COLUMBUS AFB (KCBM)

▼ * When ALS inop, increase vis to 1 3/8 miles.
 ** When ALS inop, increase CAT AB RVR to 55, vis to 1 mile, CAT CDE vis to 1 3/8 miles.

ALS-1 	MISSED APPROACH: Climb to 4000 direct HABKA, direct track to WEEWA and hold as published.
-----------	---

ATIS 115.2 273.5	APP CON 126.075 239.25 N 134.55 350.3 SE 135.6 323.275 SW	TOWER 126.65 379.925	GND CON 121.9 275.8	CLNC DEL 269.55
----------------------------	---	--------------------------------	-------------------------------	---------------------------



KREEK 3000	PLACD 2000	FENOG 1700	RW13C	HABKA	WEEWA	ELEV 218	TDZE 196
135°		135°		tr 135°		135° to RW13C	
GP 3.04° TCH 49		↑ LNAV only		↑ 1.4 NM to RW13C			
4.5 NM		4.5 NM		4.5 NM		TWR BCN 399 MIRL Rwy 13R-31L HIRL Rws 13C-31C, 13L-31R	

CATEGORY	A	B	C	D	E
LNAV/VNAV DA*	680/50		484	(500-1)	
LNAV MDA**	680/24 484 (500-1/2)		680/50	484	(500-1)
CIRCLING	740-1	522 (600-1)	760-1 1/2 542 (600-1 1/2)	780-2 562 (600-2)	1240-3 1022 (1100-3)

COLUMBUS, MISSISSIPPI

33°39'N - 88°27'W

COLUMBUS AFB (KCBM)

Amdt 1 27FEB20

RNAV (GPS) RWY 13C

SC-4, 25 MAR 2021 to 22 APR 2021

SC-4, 25 MAR 2021 to 22 APR 2021