

COLUMBUS, MISSISSIPPI

RNAV (GPS) RWY 31C

APCH CRS 315°	Rwy Idg TDZE Arpt Elev	12,004 213 218
------------------	------------------------------	----------------------

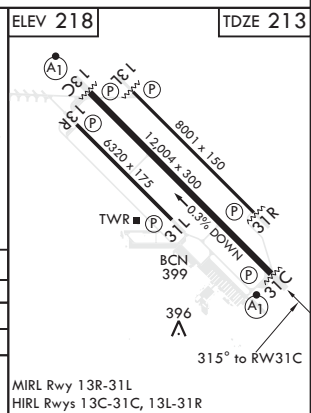
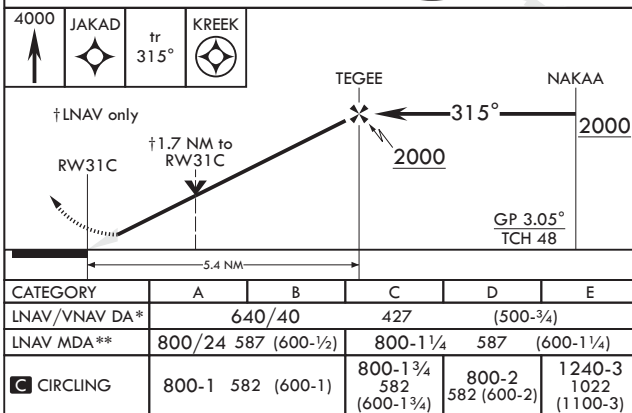
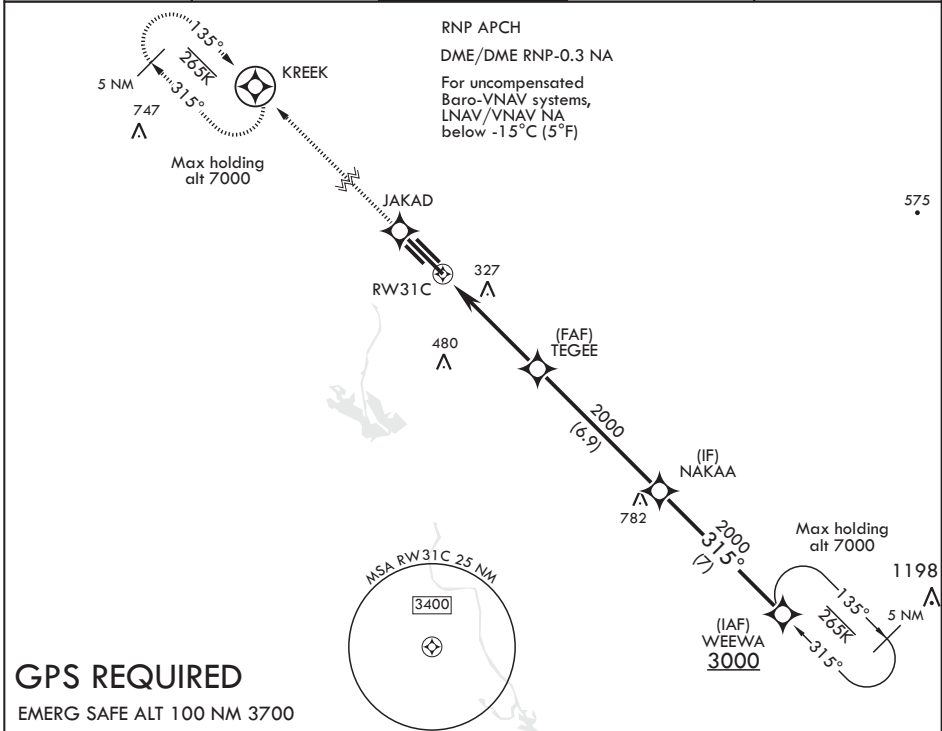
AL-91 (USAF)

COLUMBUS AFB (KCBM)

▼ * When ALS inop, increase vis to 1 1/4 miles.
 ** When ALS inop, increase CAT AB RVR to 55, vis to 1 mile;
 CAT CDE vis to 1 3/4 miles.

ALS-1 MISSED APPROACH: Climb to 4000 direct JAKAD, direct KREEK and hold.

ATIS 115.2 273.5	APP CON 126.075 239.25 N 134.55 350.3 SE 135.6 323.275 SW	TOWER 126.65 379.925	GND CON 121.9 275.8	CLNC DEL 269.55
---------------------	--	-------------------------	------------------------	--------------------



COLUMBUS, MISSISSIPPI

33°39'N - 88°27'W

COLUMBUS AFB (KCBM)

Amdt 1 27FEB20

RNAV (GPS) RWY 31C

SC-4, 25 MAR 2021 to 22 APR 2021

SC-4, 25 MAR 2021 to 22 APR 2021