

WAAS CH 45620 W31A	APP CRS 319°	Rwy Idg TDZE Apt Elev	5001 42 42
--	------------------------	-----------------------------	---------------------------------------

RNAV (GPS) RWY 31

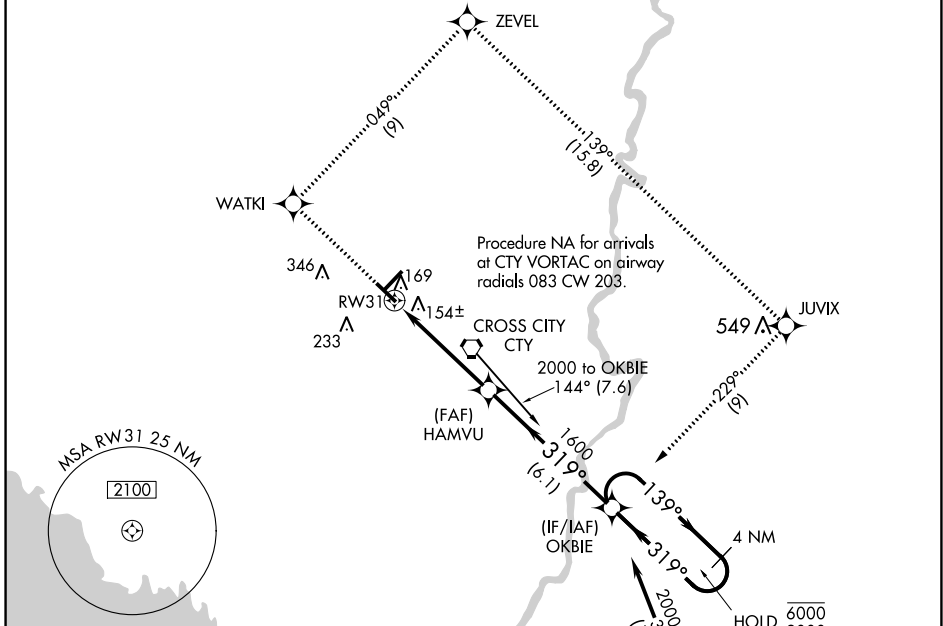
CROSS CITY (CTY)

RNP APCH.

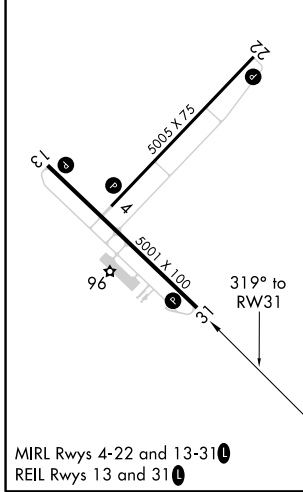
Procedure NA at night. Rwy 31 helicopter visibility reduction below 1 SM NA. Baro-VNAV NA. Use Williston altimeter setting; when not received, use Δ NA Gainesville altimeter setting and increase all DA 25 feet and all MDA 40 feet.

MISSED APPROACH: Climb to 2000 direct WATKI and right turn on track 049° to ZEVEL and on track 139° to JUVIX and right turn on track 229° to OKBIE and hold.

AWOS-3PT 120.775	X60 AWOS-3T 118.425	JACKSONVILLE CENTER 127.8 352.0	UNICOM 122.8 (CTAF)
----------------------------	-------------------------------	---	-------------------------------



ELEV 42	TDZE 42
---------	---------



2000	WATKI	ZEVEL	JUVIX	OKBIE	4 NM Holding Pattern
↑		tr 049°	tr 139°	tr 229°	
VGSI and RNAV glidepath not coincident (VGSI Angle 3.00/TCH 36).					OKBIE
					GP 3.00° TCH 59
4.7 NM		6.1 NM			
CATEGORY	A	B	C	D	
LPV DA	383-1¼		341 (400-1¼)		
LNAV/VNAV DA	546-1¾		504 (600-1¾)		
LNAV MDA	580-1	538 (600-1)	580-1½ 538 (600-1½)	580-1¾ 538 (600-1¾)	

SE-3, 25 MAR 2021 to 22 APR 2021

SE-3, 25 MAR 2021 to 22 APR 2021