

ILS RWY 6 (CAT II)

MC GUIRE FLD,

AL-150 [USAF]

(JOINT BASE MC GUIRE DIX LAKEHURST) (KWRI)

LOC I-WRI 110.1	APCH CRS 058°	Rwy Ldg TDZE Arpr Elev 10,014 131 141
---------------------------	-------------------------	---

ALSIF-2 MISSED APPROACH: Climb to 2000 via GXU R-059 to DAYYO and hold. Alternate Missed Approach instructions: Climb to 2000 via GXU R-059 to DAYYO, expect further clearance from ATC.

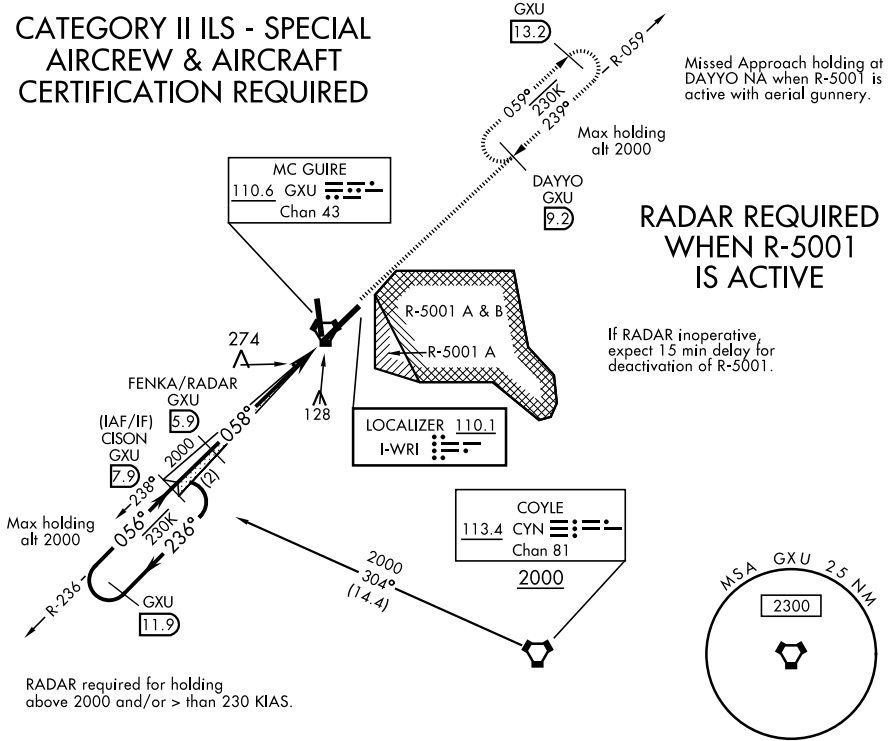
ATIS 110.6 270.1	MC GUIRE APP CON 126.475 363.8	MC GUIRE TOWER 118.65 255.6	GND CON 121.8 275.8	CLNC DEL 135.2 335.8	PAR
----------------------------	--	---------------------------------------	-------------------------------	--------------------------------	-----

CATEGORY II ILS - SPECIAL AIRCREW & AIRCRAFT CERTIFICATION REQUIRED

Missed Approach holding at DAYYO NA when R-5001 is active with aerial gunnery.

RADAR REQUIRED WHEN R-5001 IS ACTIVE

If RADAR inoperative, expect 15 min delay for deactivation of R-5001.

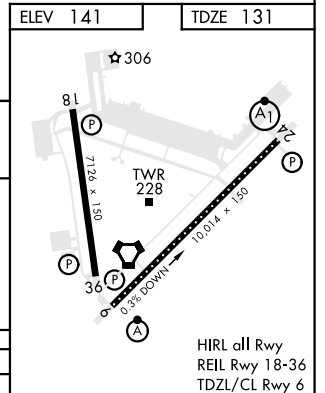
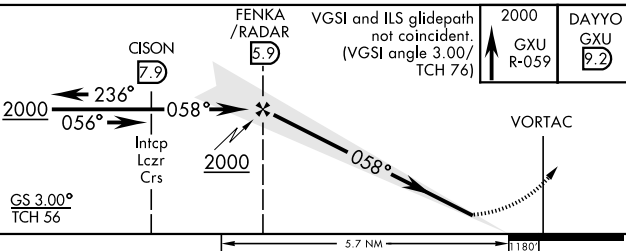


RADAR required for holding above 2000 and/or > than 230 KIAS.

RADAR or DME REQUIRED

(To identify the FAF)

EMERG SAFE ALT 100 NM 5100 FROM GXU VORTAC



CATEGORY	A	B	C	D	E
S-ILS 6		RA 91/12	100	DA 231	

ILS RWY 6 (CAT II)