

WRIGHTSTOWN, NEW JERSEY

ILS or LOC RWY 24

LOC I-JTQ 110.1	APCH CRS 238°	Rwy ldg TDZE Arpt Elev	10,014 117 141
---------------------------	-------------------------	------------------------------	---

AL-150 (USAF)
MC GUIRE FIELD (JOINT BASE MC GUIRE DIX LAKEHURST) (KWRI)

V * When ALS inop, increase RVR to 40, vis to 3/4 mile.
** When ALS inop, increase CAT A/B RVR to 55, vis to 1 mile, CAT CDE vis to 1 3/8 miles.
*** Circling East of the Airfield NA when R-5001 A/B active.

ALSF-1
MISSED APPROACH: Climb to 2000 via GXU R-236 to CISON and hold.

ATIS 110.6 270.1	MC GUIRE APP CON 126.475 363.8	TOWER 118.65 255.6	GND CON 121.8 275.8	CLNC DEL 135.2 335.8	PAR
----------------------------	--	------------------------------	-------------------------------	--------------------------------	-----

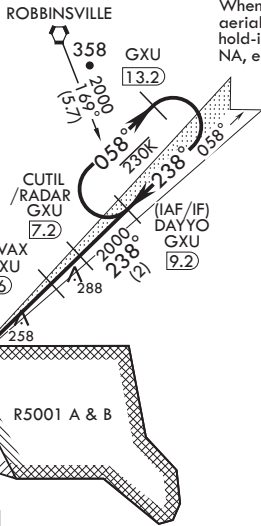
Autopilot coupled approach NA below 580 ft.

RADAR required for holding above 2000 and/or > 230 KIAS.

RADAR REQUIRED WHEN R-5001 IS ACTIVE.

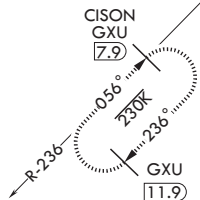
If RADAR inoperative, expect 15 min delay for deactivation of R-5001.

When R-5001 is active with aerial gunnery, DAYYO hold-in-lieu of procedure turn NA, expect RADAR vectors.

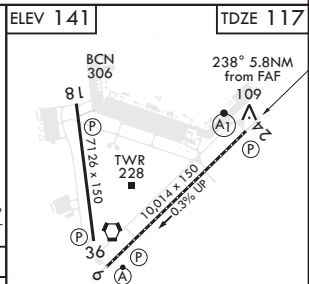
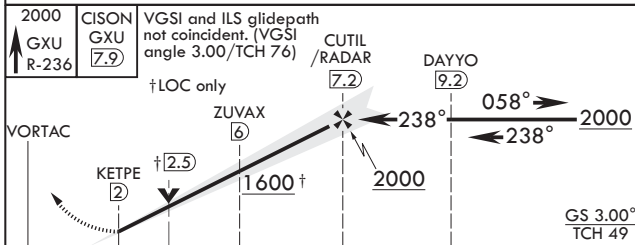


RADAR or DME REQUIRED

(To identify the FAF)



EMERG SAFE ALT 100 NM 5100 FROM GXU VORTAC



CATEGORY	A	B	C	D	E
	S-ILS 24*	317/24		200	(200-1/2)
	S-LOC 24**	560/24	443 (500-1/2)	560/45	443 (500-3/8)
CIRCLING***	680-1	539 (600-1)	700-1 1/2 559 (600-1 1/2)	700-2 559 (600-2)	1200-3 1059 (1100-3)

ELEV	141	TDZE	117
HIRL all Rwys REIL Rwys 18, 36 TDZL/CL Rwy 6			
FAF to MAP 5.2 NM			
Knots	60	90	120 150 180
Min:Sec	5:12	3:28	2:36 2:05 1:44

WRIGHTSTOWN, NEW JERSEY
Amdt 3 05DEC19

MC GUIRE FIELD (JOINT BASE MC GUIRE DIX LAKEHURST) (KWRI)
40°01'N - 74°36'W

ILS or LOC RWY 24

NE-2, 25 MAR 2021 to 22 APR 2021

NE-2, 25 MAR 2021 to 22 APR 2021