

WRIGHTSTOWN, NEW JERSEY

ILS or LOC RWY 6

MC GUIRE FLD,

AL-150 [USAF] (JOINT BASE MC GUIRE DIX LAKEHURST) (KWRI)

LOC I-WRI 110.1	APCH CRS 058°	Rwy Ldg 10,014 TDZE 131 Arprt Elev 141
---------------------------	-------------------------	---

- * When ALS inop, increase RVR to 40, vis to 3/4 mile.
- * When TDZ/CL lights inop increase RVR to 24.
- ** When ALS inop, increase CAT AB RVR to 55, vis to 1 mile; CAT CDE RVR to 60, vis to 1 1/2 miles.



MISSED APPROACH: Climb to 2000 via GXU R-059 to DAYYO and hold. Alternate Missed Approach Instruction: Climb to 2000 via GXU R-059 to DAYYO, expect further clearance from ATC.

ATIS 110.6 270.1	MC GUIRE APP CON 126.475 363.8	MC GUIRE TOWER 118.65 255.6	GND CON 121.8 275.8	CLNC DEL 135.2 335.8	PAR
----------------------------	--	---------------------------------------	-------------------------------	--------------------------------	-----

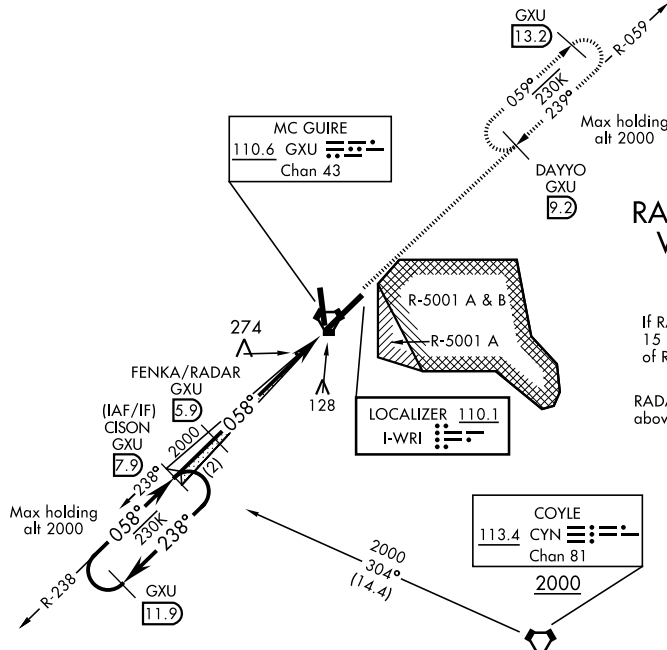
*** Circling East of Airfield NA when R-5001 A/B Active.

Missed Approach holding at DAYYO NA when R-5001 is active with aerial gunnery.

RADAR REQUIRED WHEN R-5001 IS ACTIVE

If RADAR inoperative, expect 15 min delay for deactivation of R-5001.

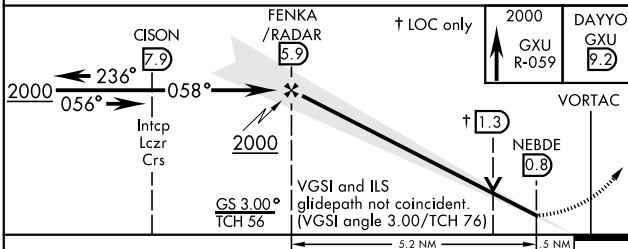
RADAR required for holding above 2000 and/or > than 230 KIAS.



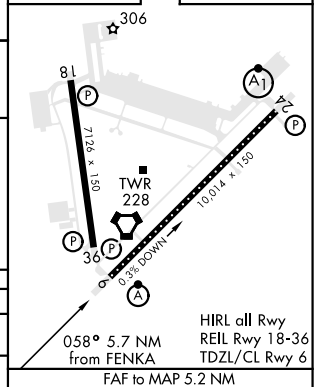
RADAR or DME REQUIRED

(To identify the FAF)

EMERG SAFE ALT 100 NM 5100 FROM GXU VORTAC



ELEV 141	TDZE 131
----------	----------



CATEGORY	A	B	C	D	E
S-ILS 6*	331/18		200	(200-1/2)	
S-LOC 6**	540/24	409 (400-1/2)	540/40	409 (400-3/4)	
CIRCLING ***	680-1	539 (600-1)	700-1 1/2 559 (600-1 1/2)	700-2 559 (600-2)	1200-3 1059 (1100-3)

Knots	60	90	120	150	180
Min:Sec	5:12	3:28	2:36	2:05	1:44

WRIGHTSTOWN, NEW JERSEY

40°01'N-74°36'W

MC GUIRE FLD,

Amtd 3 05DEC19

(JOINT BASE MC GUIRE DIX LAKEHURST) (KWRI)

ILS or LOC RWY 6

NE-2, 25 MAR 2021 to 22 APR 2021

NE-2, 25 MAR 2021 to 22 APR 2021