

MODENA FOUR DEPARTURE (MXE4•MXE)

MC GUIRE FLD, (JOINT BASE MC GUIRE DIX LAKEHURST) (KWRI)

WRIGHTSTOWN, NEW JERSEY

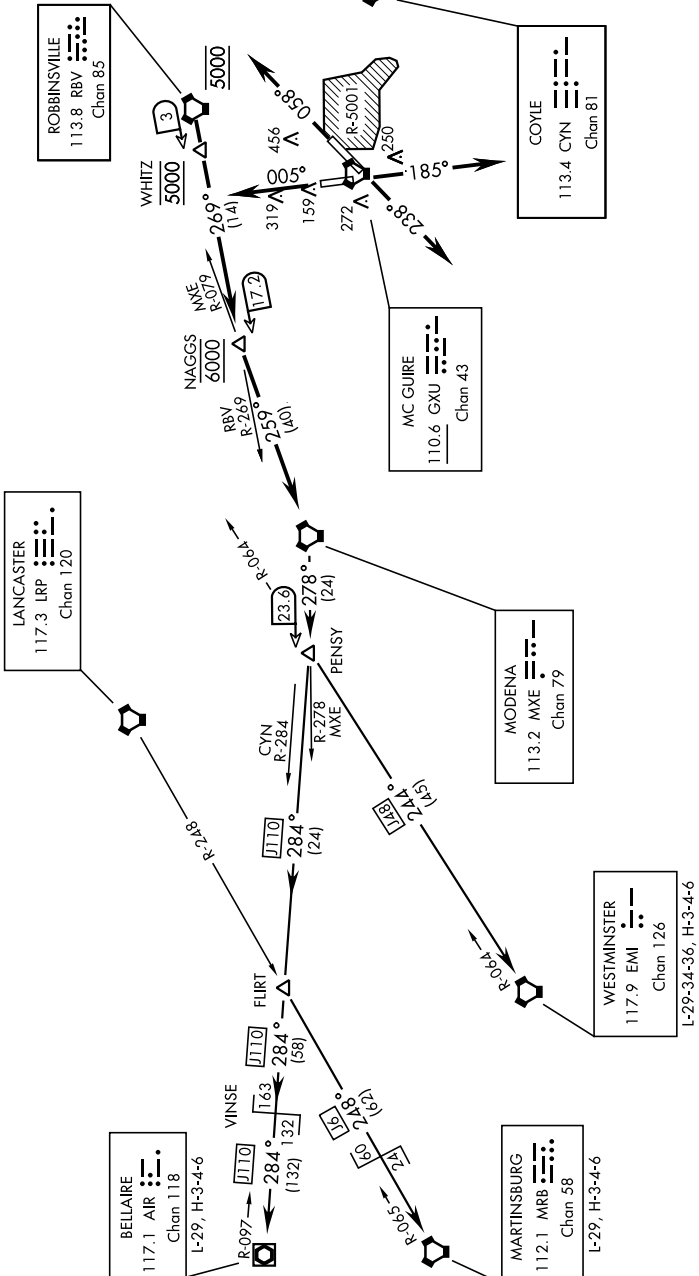
SHL-150 [USAF]

Rwy	Knots	60	120	180	240	300	360
6	V/V(fpm)	436	872	1308	1744	2180	2616
18	V/V(fpm)	351	702	1053	1404	1755	2106
24	V/V(fpm)	359	718	1077	1436	1795	2154
36	V/V(fpm)	421	842	1263	1684	2105	2526

ATC Climb Rate to 5000

RADAR REQUIRED UNTIL CROSSING MXE VORTAC R-278/23.6 DME (PENSY)

ATIS 110.6 270.1
 CLNC DEL 135.2 335.8
 GND CON 121.8 275.8
 MC GUIRE TOWER 118.65 255.6
 MC GUIRE DEP CON 126.475 363.8



NOTE: Chart not to scale

(Continued on next page)

NE-2, 25 MAR 2021 to 22 APR 2021

NE-2, 25 MAR 2021 to 22 APR 2021

MODENA FOUR DEPARTURE (MXE4•MXE)

Orig 08NOV18

MC GUIRE FLD, (JOINT BASE MC GUIRE DIX LAKEHURST) (KWRI)

WRIGHTSTOWN, NEW JERSEY