

WRIGHTSTOWN, NEW JERSEY

RNAV (GPS) RWY 18

AL-150 (USAF)
MC GUIRE FIELD (JOINT BASE MC GUIRE DIX LAKEHURST) (KWRI)

APCH CRS 185°	Rwy Idg 7126
	TDZE 123
	Arprt Elev 141

V * Circling East of Airfield NA when R-5001 A/B active. MISSED APPROACH: Climb to 2000 direct KRIZZ and hold.

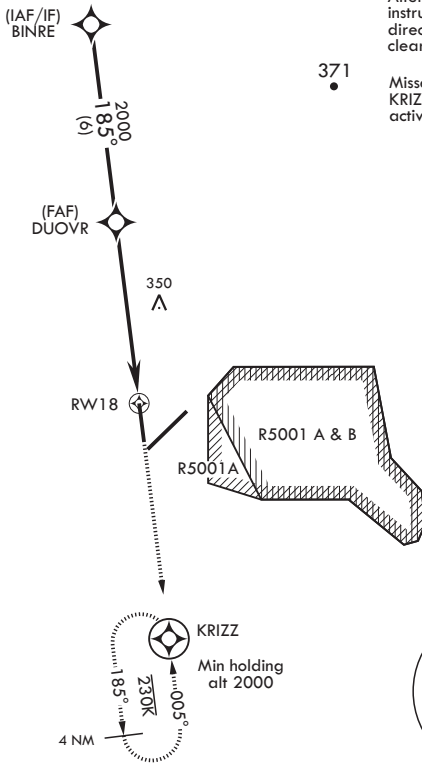
ATIS 110.6 270.1	MC GUIRE APP CON 126.475 363.8	TOWER 118.65 255.6	GND CON 121.8 275.8	CLNC DEL 135.2 335.8	PAR
----------------------------	--	------------------------------	-------------------------------	--------------------------------	-----

DME/DME RNP-0.3 NA

RADAR required for holding above 2000 and/or > 230 KIAS.

RADAR REQUIRED WHEN R-5001 IS ACTIVE AND/OR R-5002 IS ACTIVE.

If RADAR inoperative, expect 15 min delay for deactivation of R-5001 and/or R-5002.



Alternate Missed Approach instructions: Climb to 2000 direct KRIZZ, expect further clearance from ATC.

Missed approach holding at KRIZZ NA when R-5001 is active with aerial gunnery.

371

NE-2, 25 MAR 2021 to 22 APR 2021

NE-2, 25 MAR 2021 to 22 APR 2021

EMERG SAFE ALT 100 NM 5100

BINRE		DUOVR		ELEV 141		TDZE 123	
2000		2000		↑ 2000		⊙ KRIZZ	
185°		1.3 NM to RWY 18		RWY 18		185° to RWY 18	
3.10° TCH 68		5.5 NM		BCN 306		81	
						7.26 x 150	
						TWR 228	
						10014 x 150	
						0.3% DOWN	
						36	
						A1	
						A	

CATEGORY	A	B	C	D	E
LNAV MDA	600-1	477 (500-1)	600-1 $\frac{3}{8}$	477	(500-1 $\frac{3}{8}$)
C CIRCLING*	680-1	539 (600-1)	700-1 $\frac{1}{2}$ 559 (600-1 $\frac{1}{2}$)	700-2 559 (600-2)	1200-3 1059 (1100-3)

WRIGHTSTOWN, NEW JERSEY

MC GUIRE FIELD (JOINT BASE MC GUIRE DIX LAKEHURST) (KWRI)

Amdt 5 10OCT19

40°01'N - 74°36'W

RNAV (GPS) RWY 18