

# VOR/DME or TACAN RWY 18

MC GUIRE FLD,  
(JOINT BASE MC GUIRE DIX LAKEHURST) (KWRI)

VORTAC GXU <b>110.6</b> Chan <b>43</b>	APCH CRS <b>179°</b>	Rwy ldg <b>7126</b> TDZE <b>123</b> Arprt Elev <b>141</b>
----------------------------------------------	-------------------------	-----------------------------------------------------------------

AL-150 [USAF]

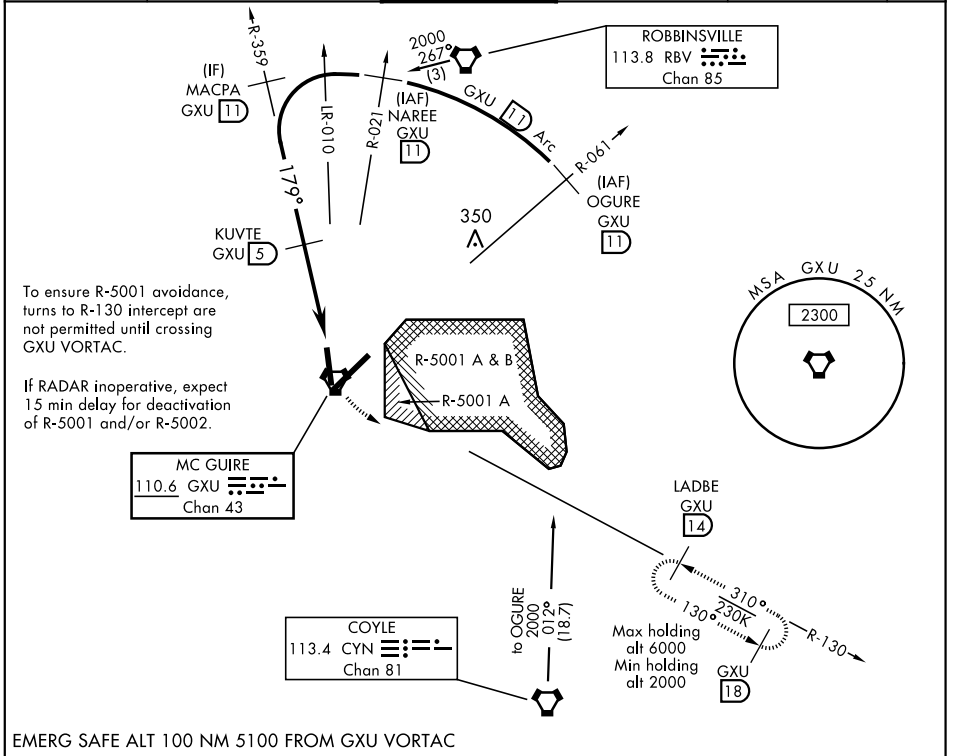
(JOINT BASE MC GUIRE DIX LAKEHURST) (KWRI)

RADAR required when R-5001 and/or R-5002 is active.

▼ \* Circling East of airfield NA when R-5001 A/B active.

MISSED APPROACH: Climb to 2000 via GXU VORTAC  
R-130 to LADBE and hold, DO NOT turn prior to GXU.

ATIS <b>110.6 270.1</b>	MC GUIRE APP CON <b>126.475 363.8</b>	MC GUIRE TOWER <b>118.65 255.6</b>	GND CON <b>121.8 275.8</b>	CLNC DEL <b>135.2 335.8</b>	PAR
----------------------------	------------------------------------------	---------------------------------------	-------------------------------	--------------------------------	-----



NE-2, 25 MAR 2021 to 22 APR 2021

NE-2, 25 MAR 2021 to 22 APR 2021

EMERG SAFE ALT 100 NM 5100 FROM GXU VORTAC

	OGURE R-061 (11)	NAREE R-021 (11)	MACPA R-359 (11)	KUVTE (5)	IPURE (1.5)	VORTAC	2000 GXU R-130 (14)	LADBE GXU (14)	ELEV 141	TDZE 123
CATEGORY	A	B	C	D	E					
S-18	620-1	497 (500-1)	620-1½	497 (500-1½)						
CIRCLING*	680-1	539 (600-1)	700-1½ 559 (600-1½)	700-2 559 (600-2)	1200-3 1059 (1100-3)					

HIRL all Rwy  
REIL Rwy 18-36  
TDZL/CL Rwy 6

# VOR/DME or TACAN RWY 18