

WRIGHTSTOWN, NEW JERSEY

VOR/DME or TACAN RWY 24

VORTAC GXU <b>110.6</b> Chan 43	APCH CRS <b>243°</b>	Rwy Idg TDZE Arpt Elev	<b>10,014</b> <b>117</b> <b>141</b>
---------------------------------------	-------------------------	------------------------------	---

AL-150 (USAF)  
MC GUIRE FIELD (JOINT BASE MC GUIRE DIX LAKEHURST) (KWRI)

<p><b>⚠</b> * When ALS inop, increase CAT AB RVR to 55 and vis to 1 mile, CAT CDE vis to 1 3/8 miles. ** Circling East of airfield NA when R-5001 A/B active.</p>	<p>ALSF-1 </p>	<p>MISSED APPROACH: Climb to 2000 via GXU R-224 to DAMTE, Expect further clearance from ATC.</p>
---	--------------------	--

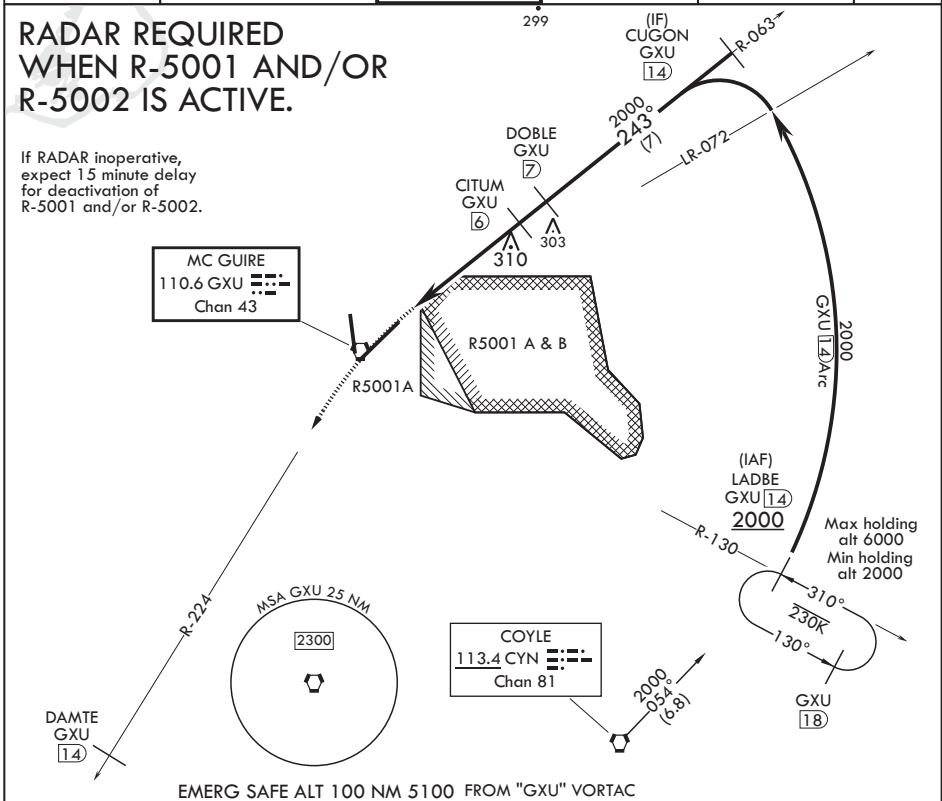
ATIS <b>110.6 270.1</b>	MC GUIRE APP CON <b>126.475 363.8</b>	TOWER <b>118.65 255.6</b>	GND CON <b>121.8 275.8</b>	CLNC DEL <b>135.2 335.8</b>	PAR
----------------------------	--	------------------------------	-------------------------------	--------------------------------	-----

**RADAR REQUIRED  
WHEN R-5001 AND/OR  
R-5002 IS ACTIVE.**

If RADAR inoperative, expect 15 minute delay for deactivation of R-5001 and/or R-5002.

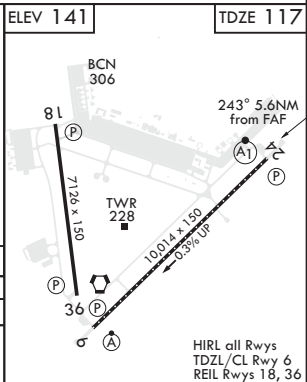
**MC GUIRE**  
110.6 GXU  
Chan 43

**COYLE**  
113.4 CYN  
Chan 81



EMERG SAFE ALT 100 NM 5100 FROM "GXU" VORTAC

2000 GXU R-224	DAMTE GXU 14					
GXU VORTAC	LAYEG GXU 2	GXU 2.7	CITUM GXU 6	DOBLE GXU 7	CUGON GXU R-063 14	LADBE GXU R-130 14
0.6		4 NM		1 NM		
		1600		2000		2000
		243°		≤ 3.07° TCH 76		
				14 Arc		
CATEGORY	A	B	C	D	E	
S-24*	580/24 463 (500-1/2)		580/50	463 (500-1)		
<b>C</b> CIRCLING**	680-1 539 (600-1)		700-1 1/2 559 (600-1/2)	700-2 559 (600-2)	1200-3 1059 (1100-3)	



HIRL all Rwy's  
TDZ/CL Rwy 6  
REIL Rwy's 18, 36

NE-2, 25 MAR 2021 to 22 APR 2021

NE-2, 25 MAR 2021 to 22 APR 2021

WRIGHTSTOWN, NEW JERSEY  
Amdt 6 10SEP20

MC GUIRE FIELD (JOINT BASE MC GUIRE DIX LAKEHURST) (KWRI)  
40°01'N - 74°36'W  
VOR/DME or TACAN RWY 24