

WRIGHTSTOWN, NEW JERSEY

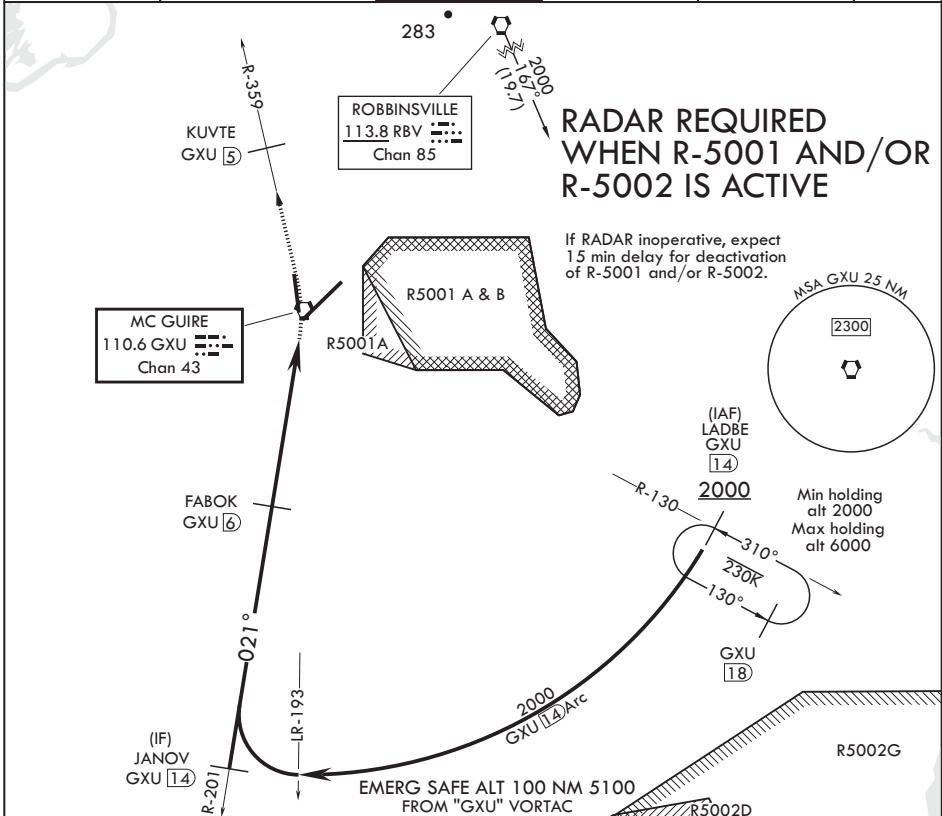
VOR/DME or TACAN RWY 36

VORTAC GXU 110.6 Chan 43	APCH CRS 021°	Rwy Idg 7126	TDZE 129
		Arprt Elev 141	

AL-150 (USAF)
MC GUIRE FIELD (JOINT BASE MC GUIRE DIX LAKEHURST) (KWRI)

▼ * Circling East of Airfield NA when R-5001 A/B active. MISSED APPROACH: Climb to 2000 via GXU R-359 to KUVTE, expect further clearance with ATC.

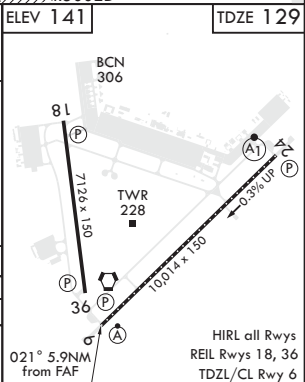
ATIS 110.6 270.1	MC GUIRE APP CON 126.475 363.8	TOWER 118.65 255.6	GND CON 121.8 275.8	CLNC DEL 135.2 335.8	PAR
---------------------	-----------------------------------	-----------------------	------------------------	-------------------------	-----



NE-2, 25 MAR 2021 to 22 APR 2021

NE-2, 25 MAR 2021 to 22 APR 2021

LADBE GXU R-130 (14)		JANOV GXU R-201 (14)		FABOK GXU (6)		GXU (14) Arc		KUVTE GXU (5)		ELEV 141		TDZE 129	
2000		2000		2000		2000		2000		2000		2000	
021°		021°		021°		2.92° TCH 46		5.1 NM		0.8			
CATEGORY	A	B	C	D	E								
S-36	600-1	471 (500-1)	600-1 3/8	471 (500-1 3/8)									
CIRCLING*	680-1	539 (600-1)	700-1 1/2 559 (600-1 1/2)	700-2 559 (600-2)	1200-3 1059 (1100-3)								



WRIGHTSTOWN, NEW JERSEY
Amdt 6 10SEP20

MC GUIRE FIELD (JOINT BASE MC GUIRE DIX LAKEHURST) (KWRI)
40°01'N - 74°36'W
VOR/DME or TACAN RWY 36

HIRL all Rwys
REIL Rwys 18, 36
TDZL/CL Rwy 6