

WRIGHTSTOWN, NEW JERSEY

VOR/DME or TACAN RWY 6

MC GUIRE FLD,
DIX LAKEHURST (KWRI)

VORTAC GXU 110.6 Chan 43	APCH CRS 044°	Rwy ldg 10,014 TDZE 131 Arprt Elev 141
--	-------------------------	---

AL-150 [USAF]

(JOINT BASE MC GUIRE DIX LAKEHURST) (KWRI)

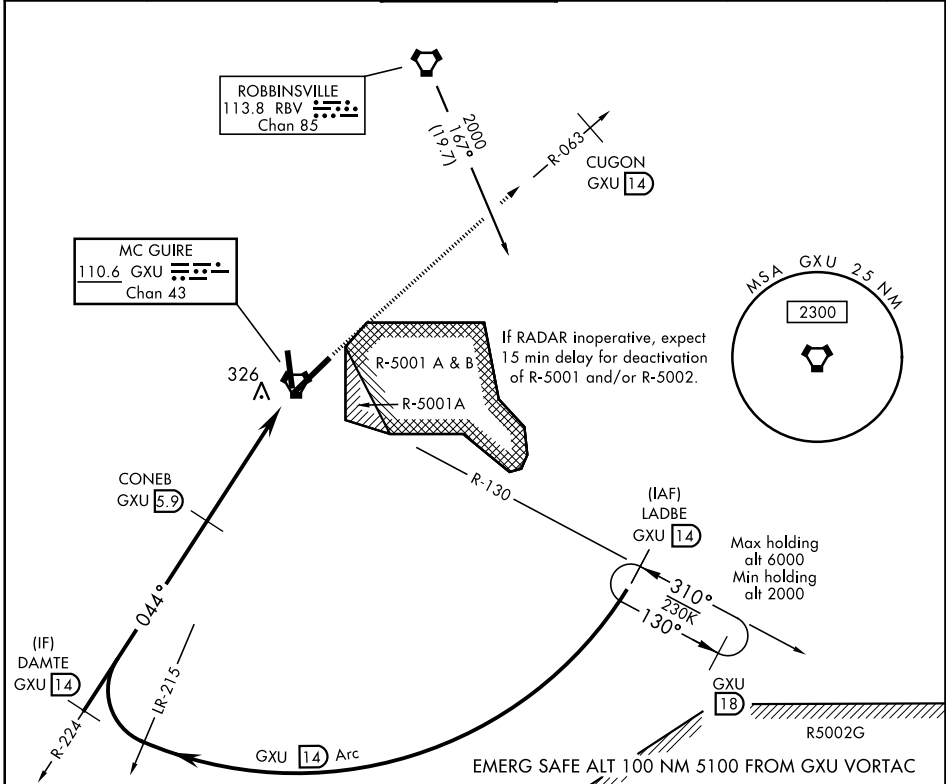
RADAR REQUIRED when R-5001 and/or R-5002 is active.

ALS-F-2

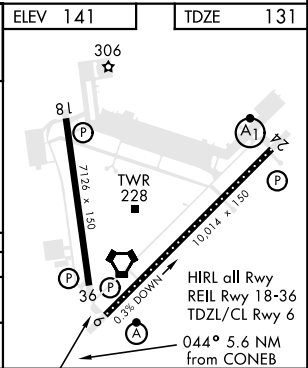
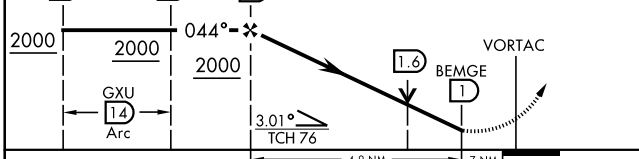
MISSED APPROACH: Climb to 2000 via GXU VORTAC R-063 to CUGON, expect further clearance from ATC.

- * When ALS inop, increase CAT AB RVR to 55 and vis to 1 mile, CAT CDE vis to 1½ miles.
- ** Circling E of airfield NA when R-5001 A/B active.

ATIS 110.6 270.1	MC GUIRE APP CON 126.475 363.8	MC GUIRE TOWER 118.65 255.6	GND CON 121.8 275.8	CLNC DEL 135.2 335.8	PAR
----------------------------	--	---------------------------------------	-------------------------------	--------------------------------	-----



LADBE GXU R-130 GXU 14	DAMTE GXU R-224 GXU 14	CONEB GXU 5.9	2000 GXU R-063 GXU 14	CUGON GXU 14	ELEV 141	TDZE 131
----------------------------------	----------------------------------	-------------------------	------------------------------------	------------------------	----------	----------



CATEGORY	A	B	C	D	E
S-6 *	640/24 509 (500-½)		640/55 509		(500-1)
CIRCLING **	680-1 539 (600-1)		700-1½ 559 (600-1½)	700-2 559 (600-2)	1200-3 1059 (1100-3)

WRIGHTSTOWN, NEW JERSEY
Amdt 6 10SEP20

40°01'N-74°36'W

MC GUIRE FLD,
DIX LAKEHURST (KWRI)

VOR/DME or TACAN RWY 6

NE-2, 25 MAR 2021 to 22 APR 2021

NE-2, 25 MAR 2021 to 22 APR 2021