


WAAS CH 70510 W22A	APP CRS 222°	Rwy Idg TDZE 78 Apt Elev 79
--	------------------------	---

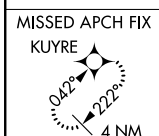
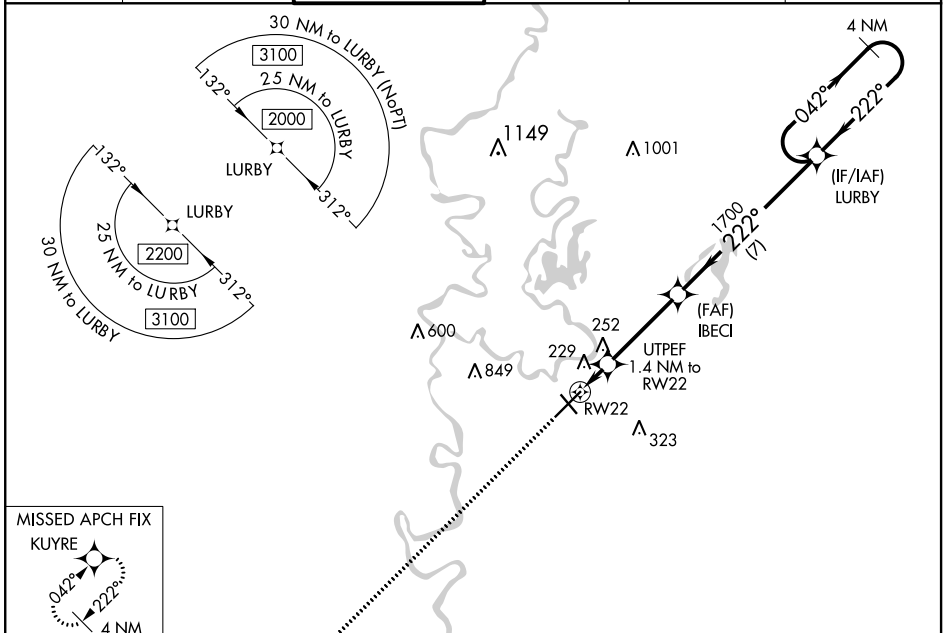
RNAV (GPS) RWY 22

MONROE RGNL (MLU)

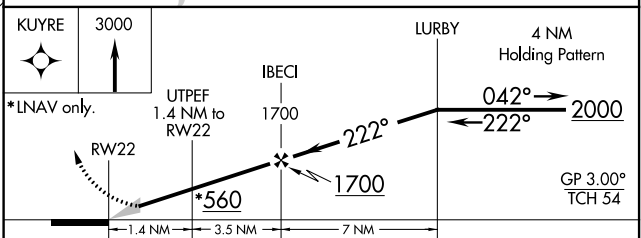
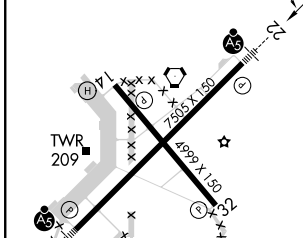
ASR For uncompensated Baro-VNAV systems, LNAV/VNAV NA below -15°C (5°F) or above 54°C (130°F). DME/DME RNP-0.3 NA. Circling Rwy 14 NA at night. Rwy 14 Helicopter visibility reduction below 1 SM not authorized.

MALSR  **MISSED APPROACH:** Climb to 3000 direct KUYRE and hold.

ATIS 125.05	MONROE APP CON ★ 118.15 290.475	MONROE TOWER ★ 118.9 (CTAF) 0 257.8	GND CON 121.9	CLNC DEL 121.65	UNICOM 122.95
-----------------------	---	---	-------------------------	---------------------------	-------------------------



ELEV 79	D	TDZE 78
----------------	----------	----------------



CATEGORY	A	B	C	D
LPV DA		278-1/2	200 (200-1/2)	
LNAV/VNAV DA		393-1/2	315 (400-1/2)	
LNAV MDA	520-1/2	442 (500-1/2)	520-3/4	442 (500-3/4)
CIRCLING	580-1	501 (600-1)	620-1 1/2	640-2
			541 (600-1 1/2)	561 (600-2)

REIL Rwy 14 and 32
MIRL Rwy 14-32 **0**
HIRL Rwy 4-22 **0**

SC-4, 25 MAR 2021 to 22 APR 2021

SC-4, 25 MAR 2021 to 22 APR 2021