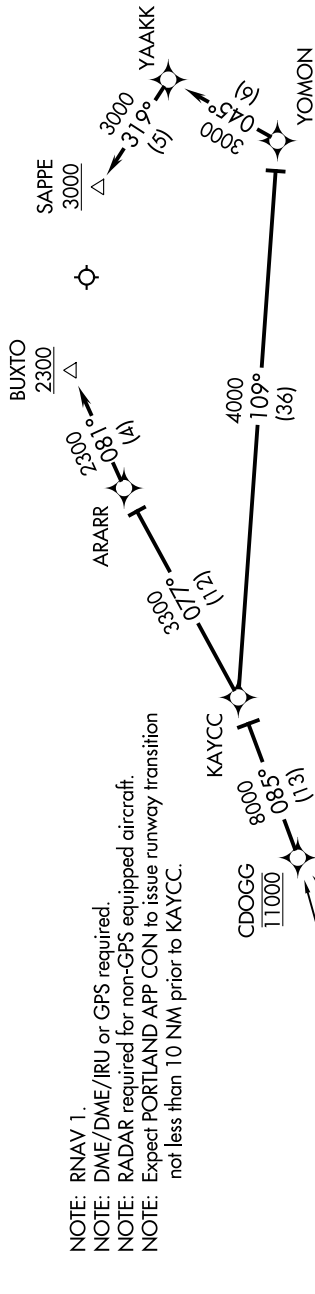


CDOGG THREE ARRIVAL (RNAV)

NE-1, 25 MAR 2021 to 22 APR 2021

PORTLAND APP CON *
119.75 269.35
ATIS
119.05

- NOTE: RNAV 1.
- NOTE: DME/DME/IRU or GPS required.
- NOTE: RADAR required for non-GPS equipped aircraft.
- NOTE: Expect PORTLAND APP CON to issue runway transition not less than 10 NM prior to KAYCC.



ARRIVAL ROUTE DESCRIPTION

CAMBRIDGE TRANSITION (CAM.CDOGG3)

KEENE TRANSITION (EEN.CDOGG3)

From CDOGG on track 085° to KAYCC.

LANDING RUNWAY 11: From KAYCC on track 077° to ARARR, then on track 081° to cross BUXTO at/above 2300. Expect ILS or LOC RWY 11.

LANDING RUNWAY 29: From KAYCC on track 109° to YOMON, then on track 045° to YAAKK, then on track 319° to cross SAPPE at/above 3000. Expect ILS or LOC to RWY 29.



NOTE: Chart not to scale.

CDOGG THREE ARRIVAL (RNAV)

NE-1, 25 MAR 2021 to 22 APR 2021