

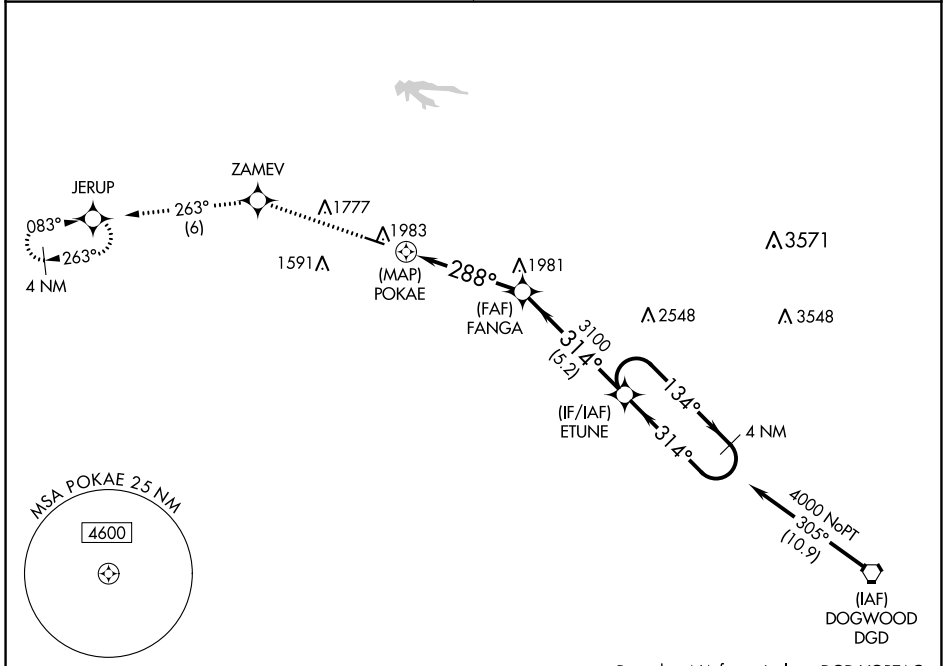
APP CRS 288°	Rwy Idg TDZE Apt Elev	N/A N/A 1375
------------------------	-----------------------------	---

RNAV (GPS)-B DOWNTOWN (3DW)

NA Circling NA north of Rwy 11-29. DME/DME RNP-0.3 NA. Use Springfield-Branson National altimeter setting; when not received, use Branson West altimeter setting and increase all MDA 60 feet. Procedure NA at night. Helicopter visibility reduction below 1 SM NA.

MISSED APPROACH: Climb to 4000 direct ZAMEV and track 263° to JERUP and hold.

SPRINGFIELD APP CON 124.95 353.7	UNICOM 122.8 (CTAF) 0*
--	----------------------------------



NC-3, 25 MAR 2021 to 22 APR 2021

NC-3, 25 MAR 2021 to 22 APR 2021

ELEV 1375

MIRL Rwy 11-29 0*

4000	ZAMEV	tr 263°	JERUP	Visual Segment - Obstacles.
↑	✧		✧	
				ETUNE 4 NM Holding Pattern
				4000
				134° →
				← 314°
				POKAE
				288°
				3100
				314°
				314°
				0.9 NM
				4.4 NM
				5.2 NM
CATEGORY	A	B	C	D
C CIRCLING	2280-1¼ 905 (1000-1¼)		NA	