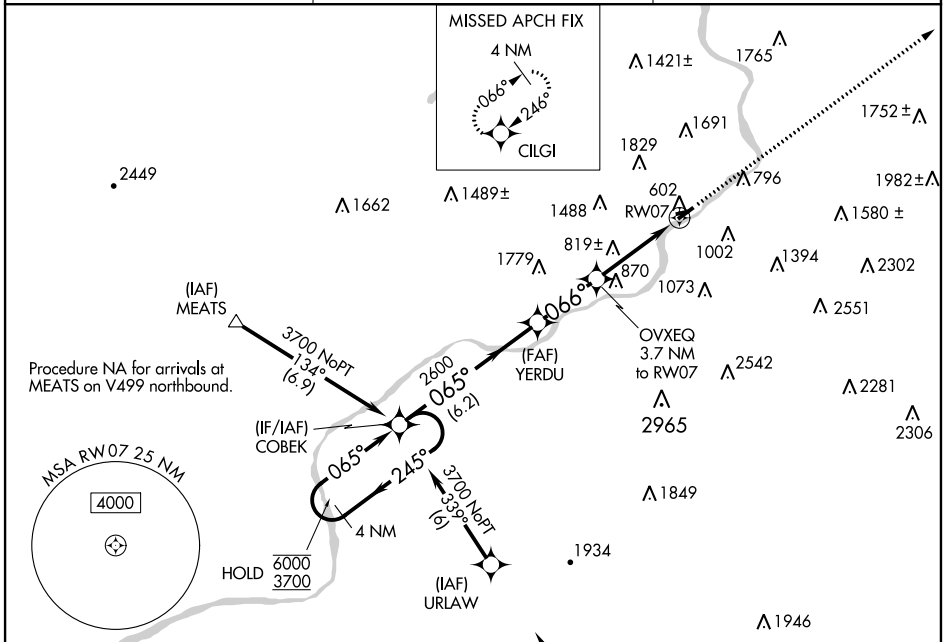


WAAS CH <b>86624</b> <b>W07A</b>	APP CRS <b>066°</b>	Rwy Idg TDZE Apt Elev	<b>3375</b> <b>543</b> <b>543</b>
--	------------------------	-----------------------------	---

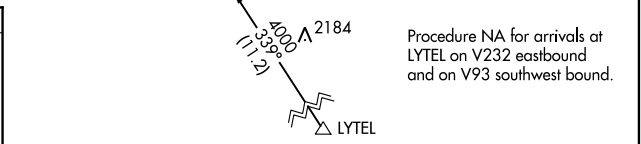
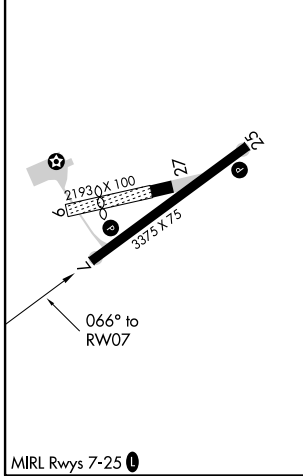
**RNAV (GPS) RWY 7**  
WILKES-BARRE WYOMING VALLEY (WBW)

RNP APCH.	<p>▼ <b>NA</b> Rwy 7 helicopter visibility reduction below 1 SM NA. Use Wilkes-Barre/Scranton altimeter setting. Circling NA NW of Rwy 7-25. Straight-in and Circling Rwy 7 NA at night.</p>	<p>MISSED APPROACH: Climb to 3800 direct CILGI and hold.</p>
-----------	--	--

AVP ASOS <b>111.6</b>	WILKES-BARRE APP CON <b>126.3 256.7</b>	UNICOM <b>122.8 (CTAF) 0</b>
--------------------------	--	---------------------------------



ELEV 543	TDZE 543
----------	----------



CATEGORY	A	B	C	D
LP MDA	1160-1	617 (700-1)		NA
LNAV MDA	1300-1 757 (800-1)	1300-1¼ 757 (800-1¼)		NA
CIRCLING	1300-1 757 (800-1)	1300-1¼ 757 (800-1¼)		NA

NE-4, 25 MAR 2021 to 22 APR 2021

NE-4, 25 MAR 2021 to 22 APR 2021