

APP CRS	Rwy Idg	<b>5411</b>
<b>026°</b>	TDZE	<b>996</b>
	Apt Elev	<b>998</b>

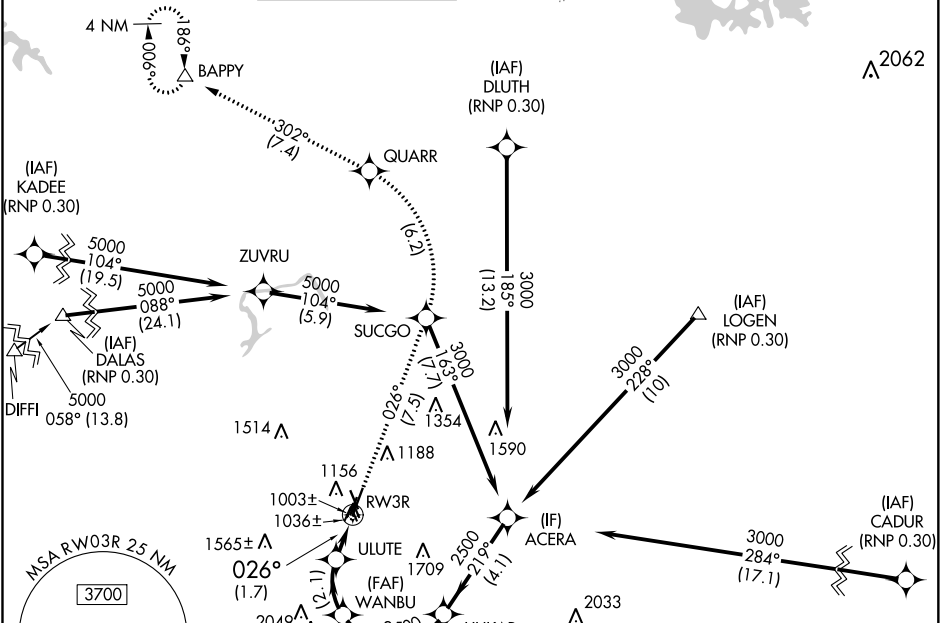
# RNAV (RNP) RWY 3R

DEKALB-PEACHTREE (PDK)

**▽** For uncompensated Baro-VNAV systems, procedure NA below 1°C (33°F) or above 45°C (114°F). RF required. GPS required.

MISSED APPROACH: Climb to 4000 on track 026° to SUCGO then left turn to QUARR then on track 302° to BAPPY and hold.

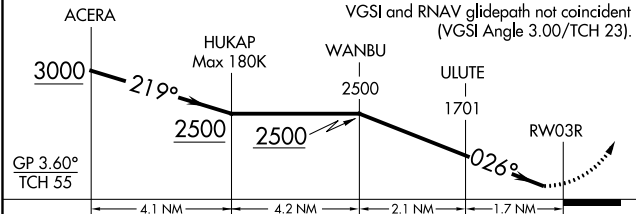
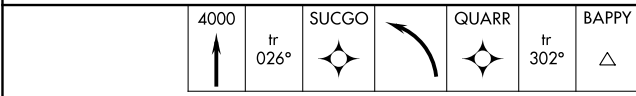
ATIS	ATLANTA APP CON	PEACHTREE TOWER ★	GND CON	CLNC DEL	CLNC DEL	UNICOM	<b>120.0</b>
<b>128.4</b>	<b>126,975 239,275</b>	<b>120.9(CTAF) 281.5</b>	<b>121.6</b>	<b>125.2</b>	(When twr closed)	<b>122.95</b>	



SE-4, 25 MAR 2021 to 22 APR 2021

SE-4, 25 MAR 2021 to 22 APR 2021

ELEV	998	TDZE	996
------	-----	------	-----



CATEGORY	A	B	C	D
RNP 0.10 DA	1334-1	338 (400-1)		NA
RNP 0.30 DA	1441-1 3/8	445 (500-1 3/8)		NA

**AUTHORIZATION REQUIRED**

