

APP CRS	Rwy Idg	<b>4996</b>
<b>221°</b>	TDZE	<b>991</b>
	Apt Elev	<b>998</b>

# RNAV (GPS) Y RWY 21L

DEKALB-PEACHTREE (PDK)

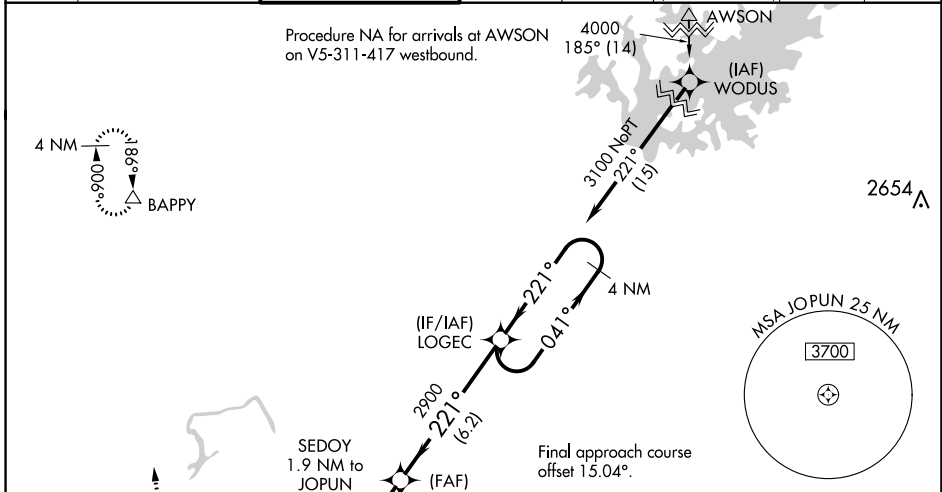
RNP APCH.

⚠ Circling Rwy 16, 34 NA at night. Baro-VNAV NA when using Fulton County Executive/ Charlie Brown Field altimeter setting. For uncompensated Baro-VNAV systems, LNAV/VNAV NA below 1°C or above 54°C. Rwy 21 helicopter visibility reduction below ¼ SM NA. For inop MALSF, increase LNAV/VNAV all Cats visibility to 1½ mile and LNAV Cats C/D visibility to 1½ mile. When local altimeter not received, use Fulton County Executive/Charlie Brown Field altimeter setting and increase LNAV/VNAV all Cats DA to 1505 and all MDA 60 feet; increase LNAV/VNAV all Cats visibility ½ mile, LNAV Cats C/D visibility ½ mile and Circling Cat C visibility ¼ mile. VDP NA when using Fulton County Airport-Brown Field altimeter setting. For inop MALSF when using Fulton County Executive/Charlie Brown Field altimeter setting, increase LNAV/VNAV Cat D visibility to 2 miles and LNAV Cat D visibility to 1½ mile.

MALSF

MISSED APPROACH:  
Climbing right turn to 4000 direct BAPPY and hold.

ATIS	ATLANTA APP CON	PEACHTREE TOWER ★	GND CON	CLNC DEL	CLNC DEL	UNICOM	120.0
<b>128.4</b>	<b>126.975 239.275</b>	<b>120.9 (CTAF) 281.5</b>	<b>121.6</b>	<b>125.2</b>	<b>120.9</b> (When twr closed)	<b>122.95</b>	<b>120.0</b>



ELEV 998	<b>D</b> TDZE 991		
4000 BAPPY	SEDJOY 1.9 NM to JOPUN	KOVEY 2900	LOGEC 4 NM Holding Pattern
*LNAV only.	*1 NM to JOPUN		
	JOPUN	1780*	2900
0.4	1 NM	0.9 NM	3.5 NM
			6.2 NM
CATEGORY	A	B	C
LNAV/VNAV DA	1461-1¼ 470 (500-1¼)		
LNAV MDA	1500-¾ 509 (600-¾)	1500-1¼ 509 (600-1¼)	
<b>C</b> CIRCLING	1580-1 582 (600-1)	1840-2½ 842 (900-2½)	2060-3 1062 (1100-3)

TWR 1133

3L 3R

34

HIRL Rwy 3R-21L

MIRL Rws 16-34 and 3L-21R

REIL Rws 3R and 34

SE-4, 25 MAR 2021 to 22 APR 2021

SE-4, 25 MAR 2021 to 22 APR 2021