

LOC I-CJF 110.15	APP CRS 308°	Rwy Idg TDZE Apt Elev	7000 590 597
----------------------------	------------------------	-----------------------------	-----------------------------------------

ILS or LOC RWY 31

ABRAHAM LINCOLN CAPITAL (SPI)

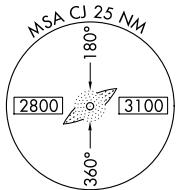
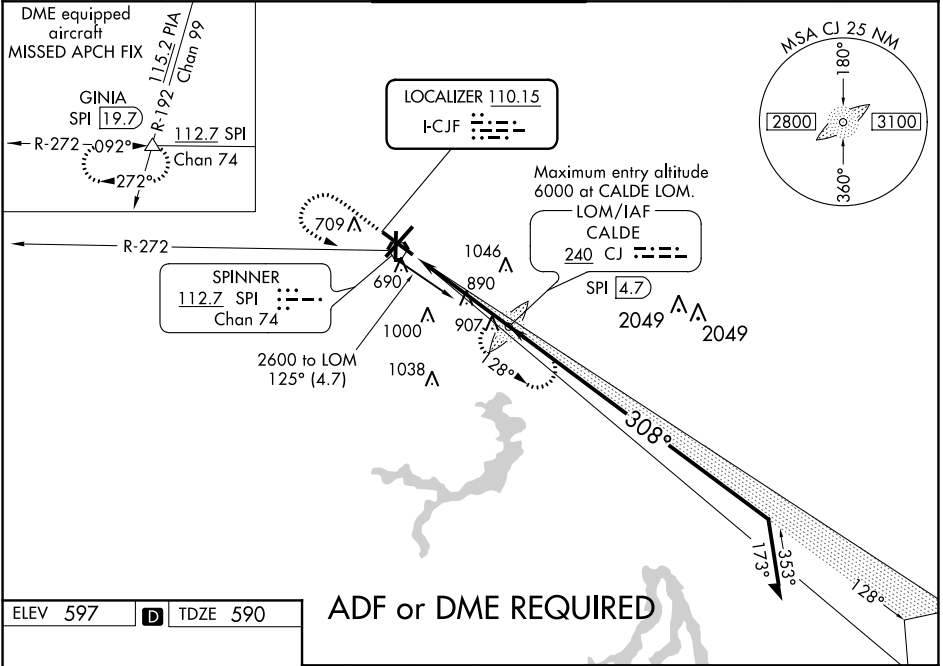
ADF or DME REQUIRED.
If local altimeter setting not received use Logan County altimeter setting and increase all DAs/MDAs 60 feet.

NA For inop MALSR, increase S-ILS-31 Cat E visibility to 3/4 and S-LOC-31 Cat E visibility to 2 1/4.
ASR Autopilot coupled approach NA below 850.

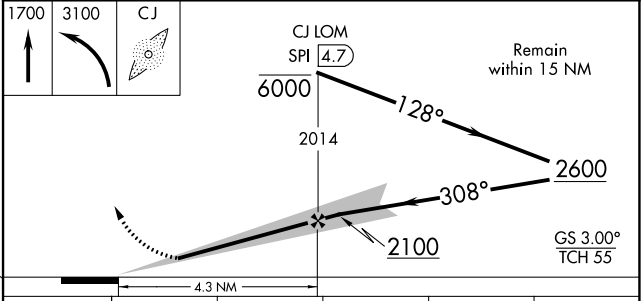
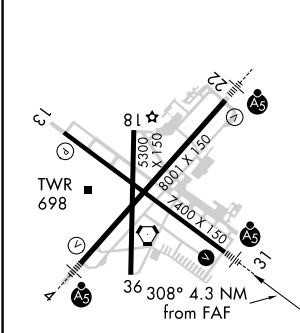
MALSR

MISSED APPROACH: Climb to 1700 then climbing left turn to 3100 direct CALDE LOM and hold. (DME equipped aircraft climb to 1700, then climbing left turn to 3200 via SPI R-272 to GINIA INT/SPI 19.7 DME and hold.)

ATIS 127.65 270.1	SPRINGFIELD APP CON * 126.15 323.0	SPRINGFIELD TOWER * 121.3 (CTAF) 257.8	GND CON 121.9 348.6	CLNC DEL 121.7	UNICOM 122.95
-----------------------------	----------------------------------------------	--------------------------------------------------	-------------------------------	--------------------------	-------------------------



ELEV 597	D	TDZE 590
----------	----------	----------



CATEGORY	A	B	C	D	E
S-ILS 31	790-1/2 200 (200-1/2)				
S-LOC 31	1200-1/2 610 (700-1/2)	1200-1/2 610 (700-1/2)	1200-1/2 610 (700-1/2)	1200-1/2 610 (700-1/2)	1200-1/2 610 (700-1/2)
CIRCLING	1200-1 603 (700-1)	1200-1 603 (700-1)	1200-2 603 (700-2)	1200-2 603 (700-2)	1380-2 3/4 783 (800-2 3/4)

EC-3, 25 MAR 2021 to 22 APR 2021

EC-3, 25 MAR 2021 to 22 APR 2021