

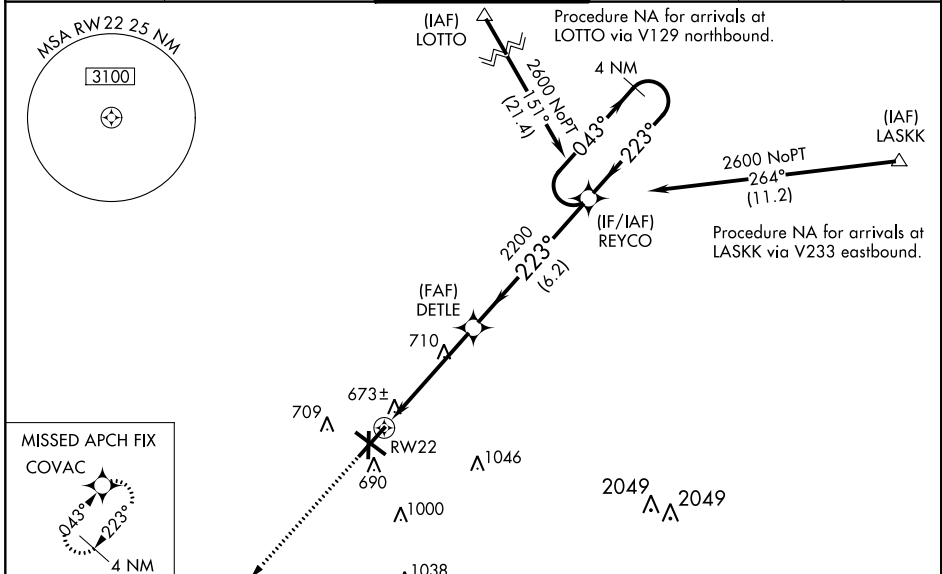
WAAS CH 81809 W22A	APP CRS 223°	Rwy Idg TDZE 598 Apt Elev 598	8001
--	------------------------	---	-------------

RNAV (GPS) RWY 22

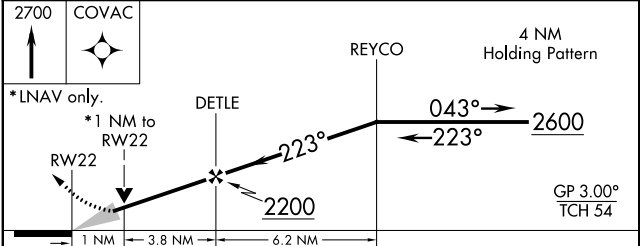
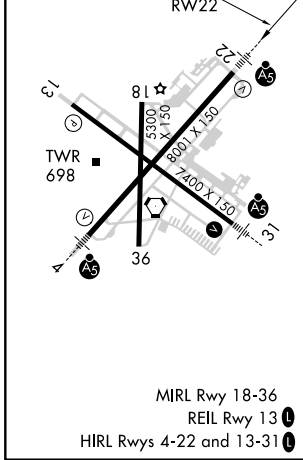
ABRAHAM LINCOLN CAPITAL (SPI)

<p>ASR</p>	<p>DME/DME RNP-0.3 NA. For uncompensated Baro-VNAV systems LNAV/VNAV NA below -16°C (4°F) and above 47°C (116°F). When local altimeter setting not received, use Lincoln altimeter setting and increase all DA 57 feet, all MDA 60 feet, and increase LNAV/VNAV all Cats, LNAV Cats C/D and Circling Cat C visibility ¼ mile. Baro-VNAV and VDP NA when using Lincoln altimeter setting. For inoperative MALSR, increase LPV all Cats visibility to 1 mile. For inoperative MALSR when using Lincoln altimeter setting increase LPV all Cats visibility to 1 ½, LNAV/VNAV all Cats visibility to 1 ¾, LNAV Cats C/D visibility to 1 ¼.</p>	<p>MALSR</p>	<p>MISSED APPROACH: Climb to 2700 direct COVAC and hold.</p>
-------------------	--	--------------	--

ATIS 127.65 270.1	SPRINGFIELD APP CON ★ 126.15 323.0	SPRINGFIELD TOWER ★ 121.3 (CTAF) 0 257.8	GND CON 121.9 348.6	CLNC DEL 121.7	UNICOM 122.95
-----------------------------	--	--	-------------------------------	--------------------------	-------------------------



ELEV 598	D	TDZE 598
-----------------	----------	-----------------



CATEGORY	A	B	C	D
LPV DA	884-½		286 (300-½)	
LNAV/VNAV DA	1050-1		452 (500-1)	
LNAV MDA	960-½ 382 (400-½)		960-⅝ 382 (400-⅝)	
C CIRCLING	1040-1¼ 442 (500-1¼)	1100-1¼ 502 (600-1¼)	1360-2¼ 762 (800-2¼)	1380-2½ 782 (800-2½)

EC-3, 25 MAR 2021 to 22 APR 2021

EC-3, 25 MAR 2021 to 22 APR 2021