

WAAS CH <b>69611</b> <b>W17A</b>	APP CRS <b>168°</b>	Rwy ldg TDZE Apt Elev	<b>5002</b> <b>1135</b> <b>1166</b>
--	------------------------	-----------------------------	---

# RNAV (GPS) RWY 17

EDWARD F KNAPP STATE (MPV)

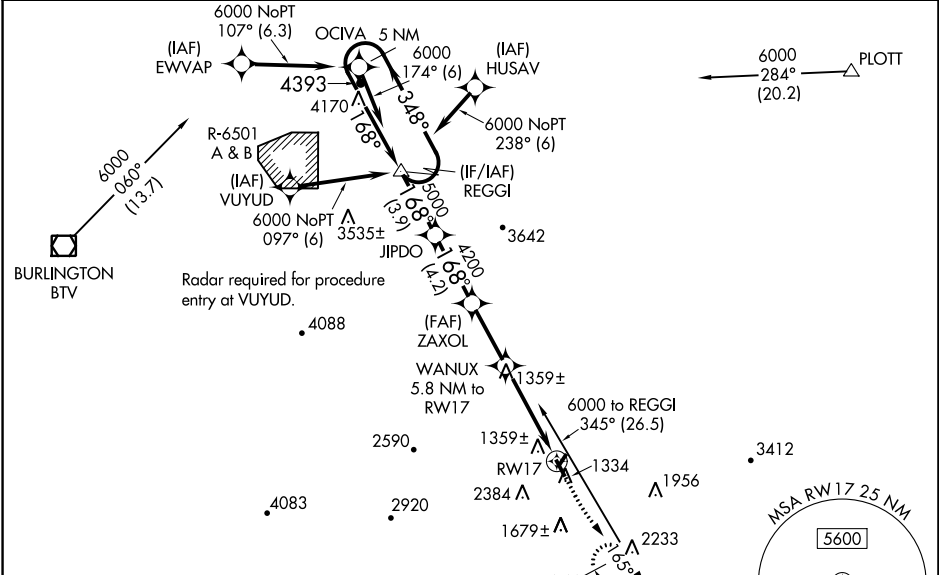
RNP APCH.

**⚠** For uncompensated Baro-VNAV systems, LNAV/VNAV NA below -21°C or above 54°C. Rwy 17 helicopter visibility reduction below 3/4 SM NA.  
**⚠ NA** When local altimeter setting not received, procedure NA. Circling Rwy 5, 35, NA at night. For inoperative MALS, increase LNAV/VNAV all Cats visibility to 1 1/2 miles.  
**⚠ -20°C**



**MISSED APPROACH:**  
Climb to 1700 then climb to 5200 direct MPV VOR/DME and hold, continue climb-in-hold to 5200.

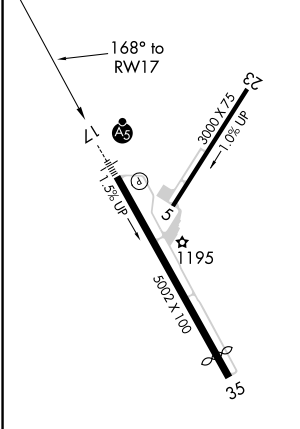
ASOS <b>132.675</b>	BOSTON CENTER <b>135.7 282.2</b>	UNICOM <b>122.8 (CTAF) 0</b>
------------------------	-------------------------------------	---------------------------------



NE-1, 25 MAR 2021 to 22 APR 2021

NE-1, 25 MAR 2021 to 22 APR 2021

ELEV 1166	TDZE 1135
-----------	-----------



REIL Rwy 17-35  
MIRL Rwy 5-23  
MIRL Rwy 17-35 **0**

5 NM Holding Pattern 6000 ← 348° GP 3.00° TCH 50 5000 4200 ← *2980 3.9 NM   4.2 NM   3.8 NM   4.1   1.7	REGGI	JIPDO	ZAXOL	WANUX 5.8 NM to RW17	*LNAV only.
	1700	5200	MPV		
CATEGORY	A	B	C	D	
LPV DA		1509-3/4	374 (400-3/4)		
LNAV/VNAV DA		1624-1 1/4	489 (500-1 1/4)		
LNAV MDA	1680-3/4	545 (600-3/4)	1680-1 1/4	545 (600-1 1/4)	
<b>C</b> CIRCLING	1980-1 1/4 814 (900-1 1/4)	1980-1 1/2 814 (900-1 1/2)	2700-3 1534 (1600-3)	2920-3 1754 (1800-3)	