

HARYS FOUR DEPARTURE (RNAV)

AL-552 (FAA)

VAN NUYS (VNY)
VAN NUYS, CALIFORNIA

SW-3, 25 MAR 2021 to 22 APR 2021

**TOP ALTITUDE:
FL230**

NOTE: DME/DME/IRU or GPS required.
NOTE: RADAR required.

NOTE: RNAV 1.

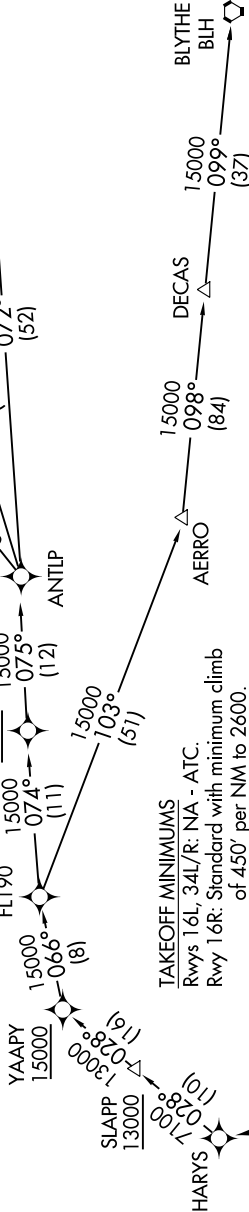
NOTE: Turbojet and high performance turboprop aircraft only.

NOTE: MISEN transition restricted to aircraft landing LAS terminal area.

NOTE: HALLO transition ATC only.

NOTE: Cross DER/VNY VOR/DME 1.5 DME south at or below 1750.

ATIS 127.55
CLNC DEL 126.6 239.0
CPDIC
GND CON
121.7
VAN NUYS TOWER* 119.3 239.0
SOCAL DEP CON 124.6 298.85



TAKEOFF MINIMUMS
Rwys 16L, 34L/R: NA - ATC.
Rwy 16R: Standard with minimum climb of 450' per NM to 2600.

DEPARTURE ROUTE DESCRIPTION

TAKEOFF RUNWAY 16R: Climb on heading 164° to 1303, then direct PPRRY, then on heading 110° or as assigned by ATC, then on vectors to cross BSHOW at or above 6000, then on track 337° to HARYS, thence
. on (transition) maintain FL230. Expect filed altitude 10 minutes after departure.

- BLYTHE TRANSITION (HARYS4.BLH)
- HALLO TRANSITION (HARYS4.HALLO)
- HECTOR TRANSITION (HARYS4.HEC)
- LAS VEGAS TRANSITION (HARYS4.LAS)
- MISEN TRANSITION (HARYS4.MISEN)

NOTE: Chart not to scale.

HARYS FOUR DEPARTURE (RNAV) (HARYS4.HARYS) 10SEP20

VAN NUYS, CALIFORNIA
VAN NUYS (VNY)

SW-3, 25 MAR 2021 to 22 APR 2021