

VOR/DME VNY 113.1 Chan 78	APP CRS 155°	Rwy Idg TDZE Apt Elev	N/A N/A 802
--	------------------------	-----------------------------	--

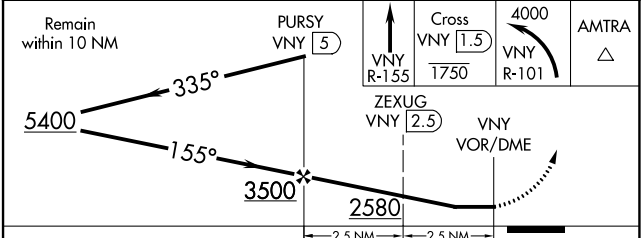
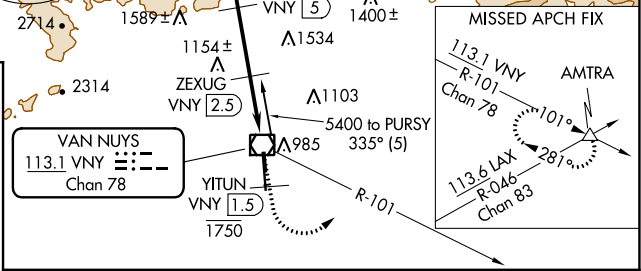
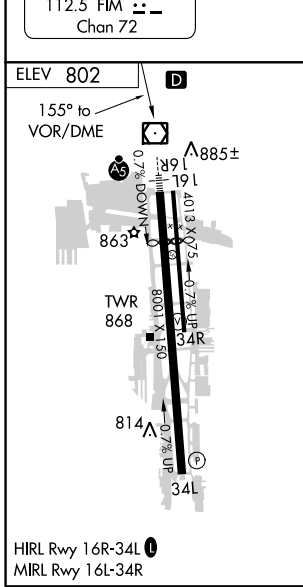
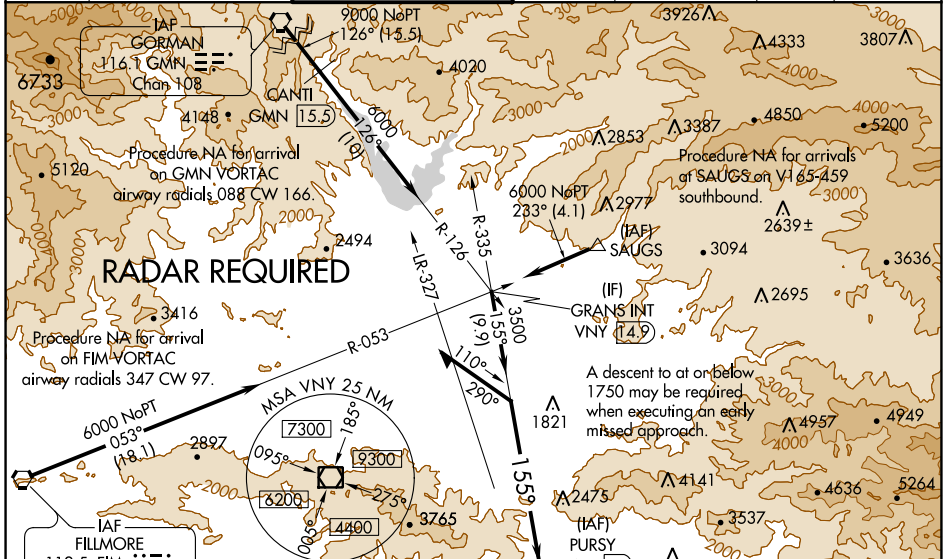
VOR-B

VAN NUYS (VNY)

⚠ DME required and RADAR required for monitoring of missed approach. Circling Rwy 16L NA at night. Circling NA for Cat D west of Rwy 16R-34L. When local altimeter setting not received, use Burbank altimeter setting and increase all MDAs to 20 feet.

MISSED APPROACH: Climb on VNY VOR/DME R-155 to cross YITUN/VNY 1.5 DME at or below 1750 then climbing left turn to 4000 on VNY VOR/DME R-101 to AMTRA INT and hold.

ATIS 127.55	SOCAL APP CON 120.4 360.6 (NORTH) 134.2 338.2 (WEST)	VAN NUYS TOWER * 119.3 (CTAF) 0 239.0	GND CON 121.7	CLNC DEL 126.6 239.0	CPDLC	UNICOM 122.95
-----------------------	--	---	-------------------------	--------------------------------	-------	-------------------------



CATEGORY	A	B	C	D
C CIRCLING	1660-1¼ 858 (900-1¼)		1660-2½ 858 (900-2½)	1740-3 938 (1000-3)

SW-3, 25 MAR 2021 to 22 APR 2021

SW-3, 25 MAR 2021 to 22 APR 2021