

WAAS CH 45514 W22A	APP CRS 222°	Rwy Idg TDZE Apt Elev	7734 539 544
--	------------------------	-----------------------------	---

RNAV (GPS) RWY 22

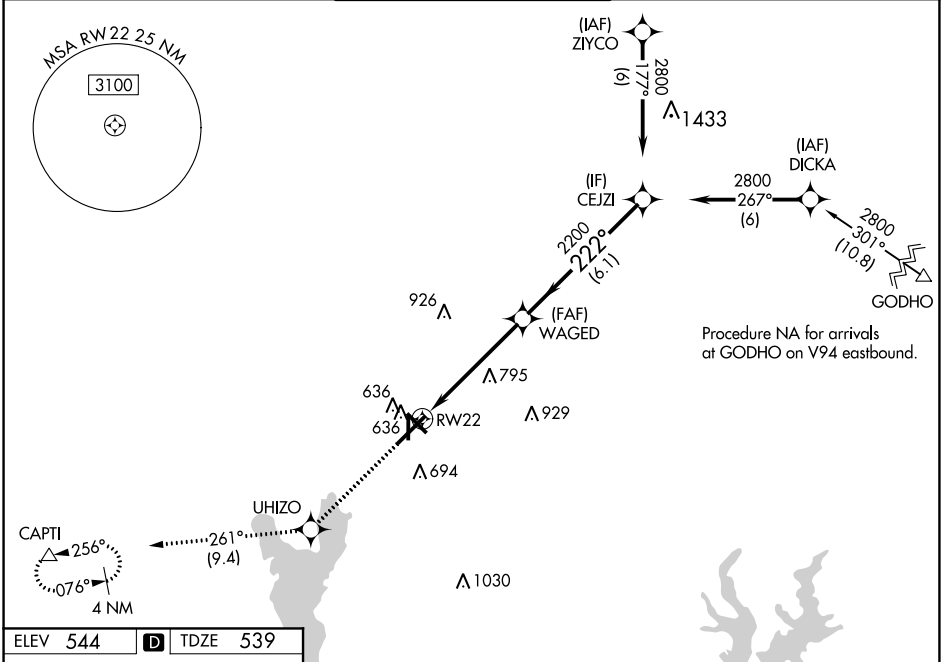
TYLER POUNDS RGNL (TYR)

RNP APCH.

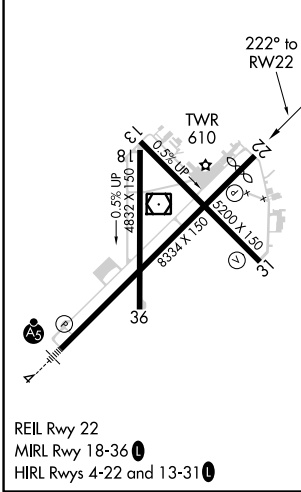
⚠ For uncompensated Baro-VNAV systems, LNAV/VNAV NA below -5°C or above 54°C.

MISSED APPROACH: Climb to 2500 direct UHIZO and on track 261° to CAPTI and hold.

ATIS 126.25	LONGVIEW APP CON* 128.75 379.15	POUNDS TOWER* 120.1 (CTAF) 257.8	GND CON 121.9	UNICOM 122.95
-----------------------	---	--	-------------------------	-------------------------



ELEV 544	D	TDZE 539
----------	----------	----------



2500	UHIZO	tr 261°	CAPTI	
*LNAV only.				
RWY 22	WAGED 2200	CEJZI 2800	GP 3.00° TCH 54	
1.4 NM	3.7 NM	6.1 NM		
CATEGORY	A	B	C	D
LPV DA		739-3/4	200 (200-3/4)	
LNAV/VNAV DA		807-7/8	268 (300-7/8)	
LNAV MDA	1040-1	501 (500-1)	1040-1 3/8	501 (500-1 3/8)
C CIRCLING	1040-1	496 (500-1)	1160-1 3/4	1280-2 1/4
			616 (700-1 3/4)	736 (800-2 1/4)

SC-2, 25 MAR 2021 to 22 APR 2021

SC-2, 25 MAR 2021 to 22 APR 2021