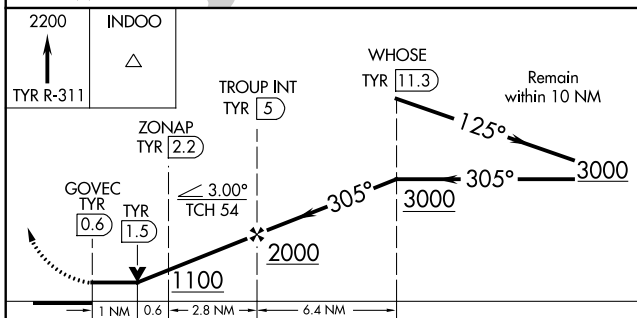
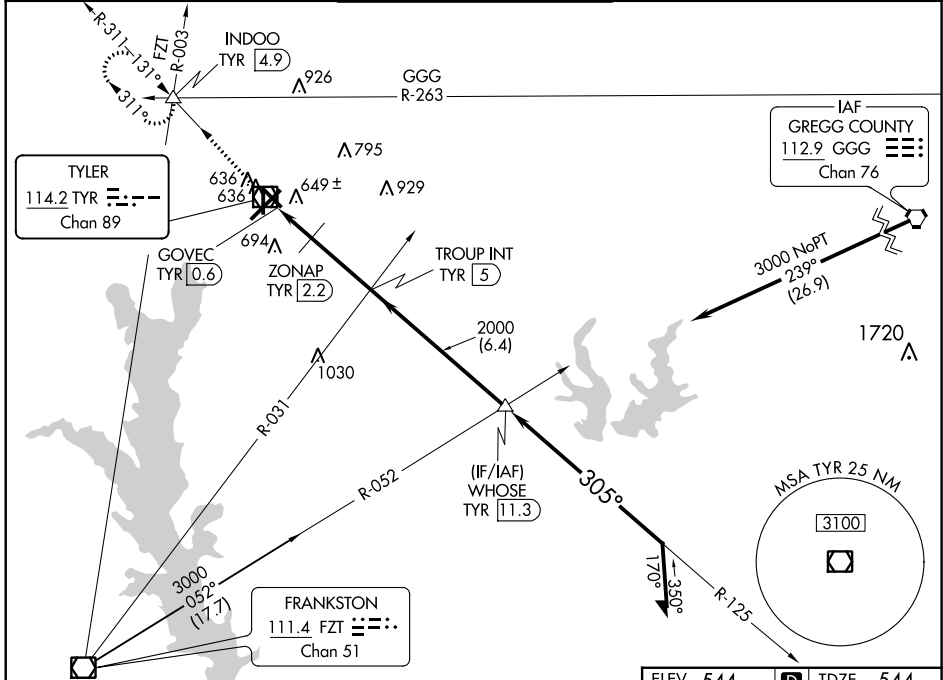


VOR/DME TYR	APP CRS	Rwy Idg TDZE	5200
<b>114.2</b>	<b>305°</b>	Apt Elev	<b>544</b>
Chan 89			

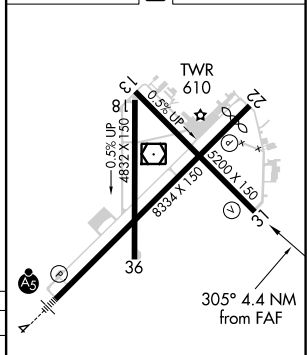
# VOR RWY 31

TYLER POUNDS RGNL (TYR)

Rwy 31 helicopter visibility reduction below 3/4 SM NA.		MISSED APPROACH: Climb to 2200 on TYR VOR/DME R-311 to INDOO INT/4.9 DME and hold.	
ATIS	LONGVIEW APP CON*	POUNDS TOWER*	GND CON
<b>126.25</b>	<b>128.75 379.15</b>	<b>120.1 (CTAF) 257.8</b>	<b>121.9</b>
			UNICOM
			<b>122.95</b>



ELEV 544	<b>D</b>	TDZE 544
----------	----------	----------



CATEGORY	A	B	C	D
S-31	1100-1	556 (600-1)	1100-1 1/2	556 (600-1 1/2)
<b>C</b> CIRCLING	1100-1	556 (600-1)	1160-1 3/4	1280-2 1/4
			616 (700-1 3/4)	736 (800-2 1/4)
ZONAP FIX MINIMUMS (DME REQUIRED)				
S-31	900-1 356 (400-1)			
<b>C</b> CIRCLING	980-1	1020-1	1160-1 3/4	1280-2 1/4
	436 (500-1)	476 (500-1)	616 (700-1 3/4)	736 (800-2 1/4)

REIL Rwy 22	MRL Rwy 18-36 <b>D</b>	HRL Rlys 4-22 and 13-31 <b>D</b>			
FAF to MAP 4.4 NM					
Knots	60	90	120	150	180
Min:Sec	4:24	2:56	2:12	1:46	1:28

SC-2, 25 MAR 2021 to 22 APR 2021

SC-2, 25 MAR 2021 to 22 APR 2021