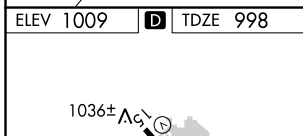
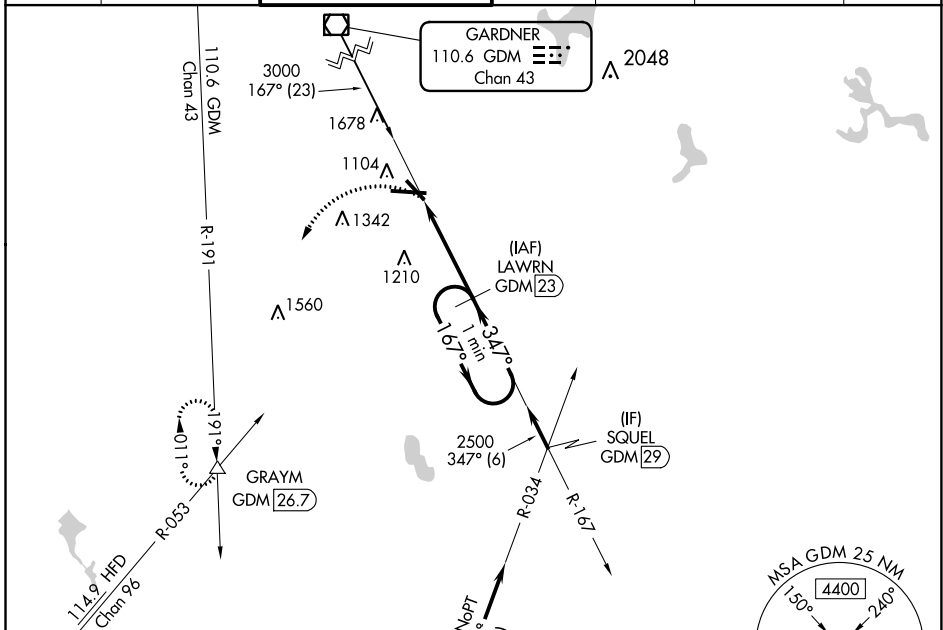


VOR/DME GDM <b>110.6</b> Chan <b>43</b>	APP CRS <b>347°</b>	Rwy Idg TDZE Apt Elev	<b>5000</b> <b>998</b> <b>1009</b>
---	------------------------	-----------------------------	--

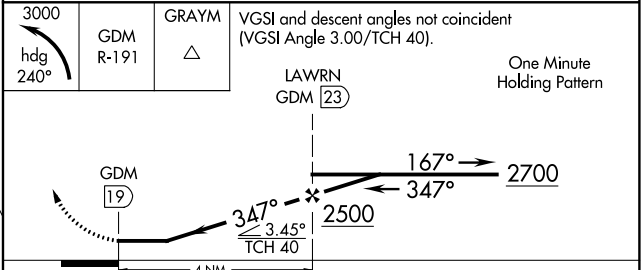
# VOR/DME RWY 33

WORCESTER RGNL (ORH)

<p><b>⚠</b> When local altimeter setting not received, Bedford altimeter setting and increase all MDAs 200 feet; increase S-33 Cat C/D visibility ½ SM and Circling Cat B ¼ SM.</p>		<p>MISSED APPROACH: Climbing left turn to 3000 on heading 240° and GDM VOR/DME R-191 to GRAYM INT/GDM 26.7 DME and hold.</p>				
ATIS <b>126.55</b>	YANKEE APP CON <b>119.0 327.1</b>	WORCESTER TOWER ★ <b>120.5 (CTAF) 263.0</b>	GND CON <b>123.85</b>	CLNC DEL <b>128.65</b>	CLNC DEL <b>119.0</b> (When twr closed)	UNICOM <b>122.95</b>



ELEV 1009	<b>D</b>	TDZE 998
<p>TDZ/CL Rwy 11 REIL Rwys 15, 29 and 33 HIRL Rwy 11-29 MIRL Rwy 15-33</p>		



CATEGORY	A	B	C	D
S-33	1520-1	522 (600-1)	1520-1½	522 (600-1½)
<b>C</b> CIRCLING	1560-1 551 (600-1)	1720-1 711 (800-1)	2000-3	991 (1000-3)

NE-1, 25 MAR 2021 to 22 APR 2021

NE-1, 25 MAR 2021 to 22 APR 2021