

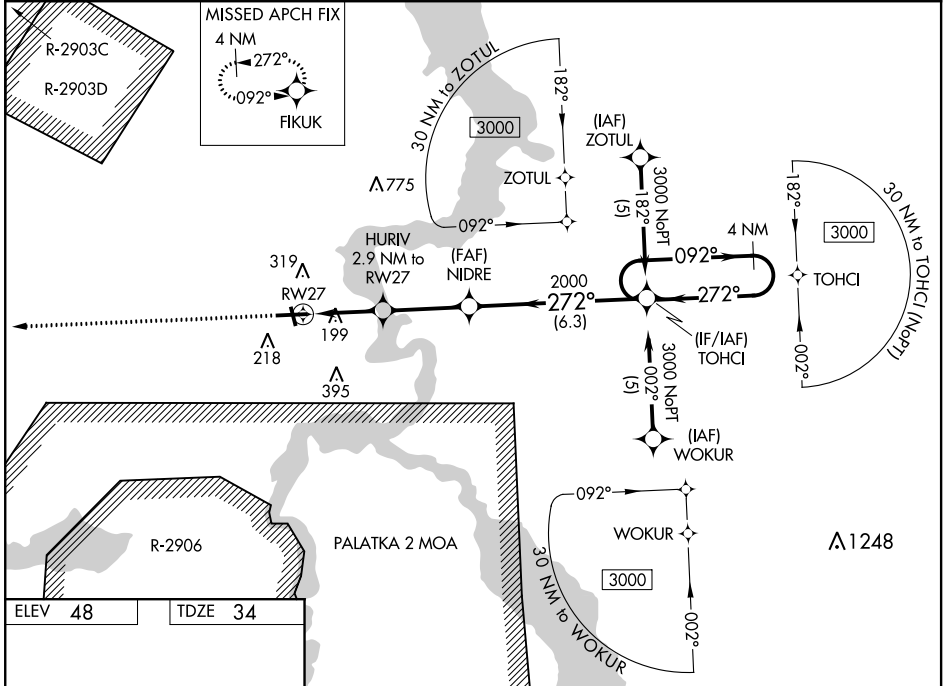
| | | | |
|--|------------------------|---|-------------|
| WAAS CH 99320 W27A | APP CRS 272° | Rwy Idg TDZE 34 Apt Elev 48 | 5551 |
|--|------------------------|---|-------------|

RNAV (GPS) RWY 27

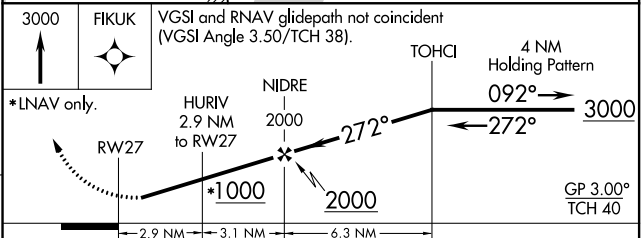
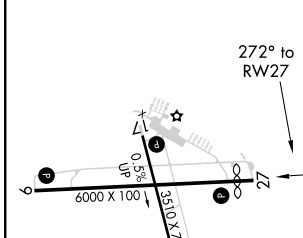
PALATKA MUNI-LT KAY LARKIN FIELD (28J)

RNP APCH.
 Baro-VNAV NA when using St. Augustine altimeter setting. For uncompensated Baro-VNAV systems, LNAV/VNAV NA below -15°C (5°F) or above 49°C (120°F). Rwy 27 helicopter visibility reduction below 3/4 SM NA. When local altimeter setting not received, use St. Augustine altimeter setting and increase LPV DA all Cats to 419, LNAV/VNAV DA all Cats to 557, and all MDA 80 feet; increase LPV all Cats, LNAV/VNAV all Cats, LNAV Cats C and D, and Circling Cat C visibility 1/4 mile. Circling Rwy 17, 35 NA at night.
MISSED APPROACH: Climb to 3000 direct FIKUK and hold.

| | | |
|--------------------------|---|---------------------------------|
| AWOS-3 119.925 | JACKSONVILLE APP CON 118.175 338.25 | UNICOM 122.8 (CTAF) 0 |
|--------------------------|---|---------------------------------|



| | |
|---------|---------|
| ELEV 48 | TDZE 34 |
|---------|---------|



| CATEGORY | A | B | C | D |
|--------------|-------|-------------|------------------------------|------------------------------|
| LPV DA | | 354-1 1/4 | 320 (400-1 1/4) | |
| LNAV/VNAV DA | | 512-1 3/4 | 478 (500-1 3/4) | |
| LNAV MDA | 460-1 | 426 (500-1) | 460-1 1/4 426 (500-1 1/4) | 460-1 1/4 426 (500-1 1/4) |
| CIRCLING | 620-1 | 572 (600-1) | 620-1 1/2 572 (600-1 1/2) | 620-2 572 (600-2) |

SE-3, 25 MAR 2021 to 22 APR 2021

SE-3, 25 MAR 2021 to 22 APR 2021