

WAAS CH <b>53320</b> <b>W09A</b>	APP CRS <b>092°</b>	Rwy Idg <b>6000</b> TDZE <b>34</b> Apt Elev <b>48</b>
--	------------------------	---

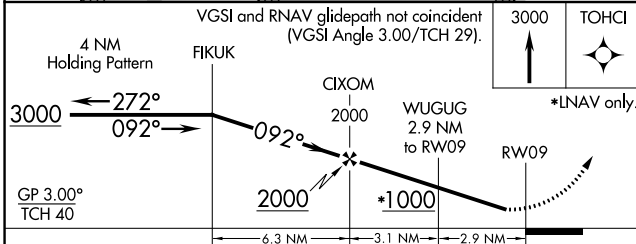
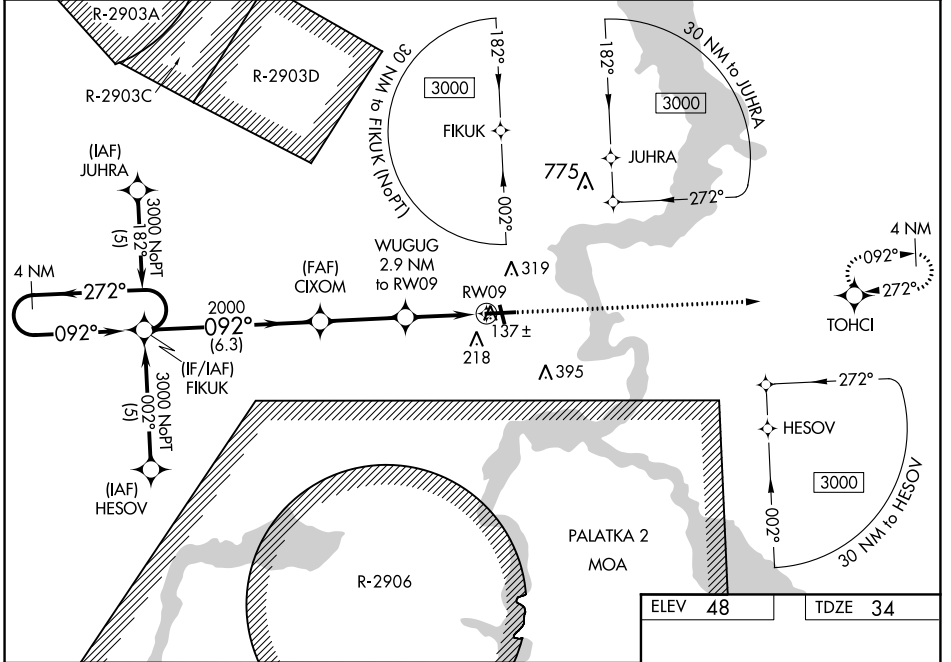
# RNAV (GPS) RWY 9

PALATKA MUNI-LT KAY LARKIN FIELD (28J)

**RNP APCH.**  
 Baro-VNAV NA when using St Augustine altimeter setting. For uncompensated Baro-VNAV systems, LNAV/VNAV NA below -15°C (5°F) or above 49°C (120°F). Rwy 9 helicopter visibility reduction below 3/4 SM NA. When local altimeter setting not received, use St. Augustine altimeter setting and increase LPV DA all Cats to 379, LNAV/VNAV DA all Cats to 457 and all MDA 80 feet; increase LPV all Cats and LNAV Cats C and D visibility 1/2 SM, and LNAV/VNAV all Cats and Circling Cat C visibility 1/4 SM. Circling Rwy 17, 35 NA at night.

**MISSED APPROACH:** Climb to 3000 direct TOHCl and hold.

<b>AWOS-3</b> <b>119.925</b>	<b>JACKSONVILLE APP CON</b> <b>118.175 338.25</b>	<b>UNICOM</b> <b>122.8 (CTAF) 0</b>
---------------------------------	--	--



ELEV <b>48</b>	TDZE <b>34</b>
----------------	----------------

CATEGORY	A	B	C	D
LPV DA		314-1	280 (300-1)	
LNAV/VNAV DA		392-1 1/4	358 (400-1 1/4)	
LNAV MDA	480-1 446 (500-1)		480-1 3/8 446 (500-1 3/8)	480-1 1/2 446 (500-1 1/2)
CIRCLING	620-1 572 (600-1)		620-1 1/2 572 (600-1 1/2)	620-2 572 (600-2)

REIL Rwy 9 and 27  
MIRL Rwy 9-27 and 17-35 0

SE-3, 25 MAR 2021 to 22 APR 2021

SE-3, 25 MAR 2021 to 22 APR 2021